

## Salem Road, W2

£1,750,000

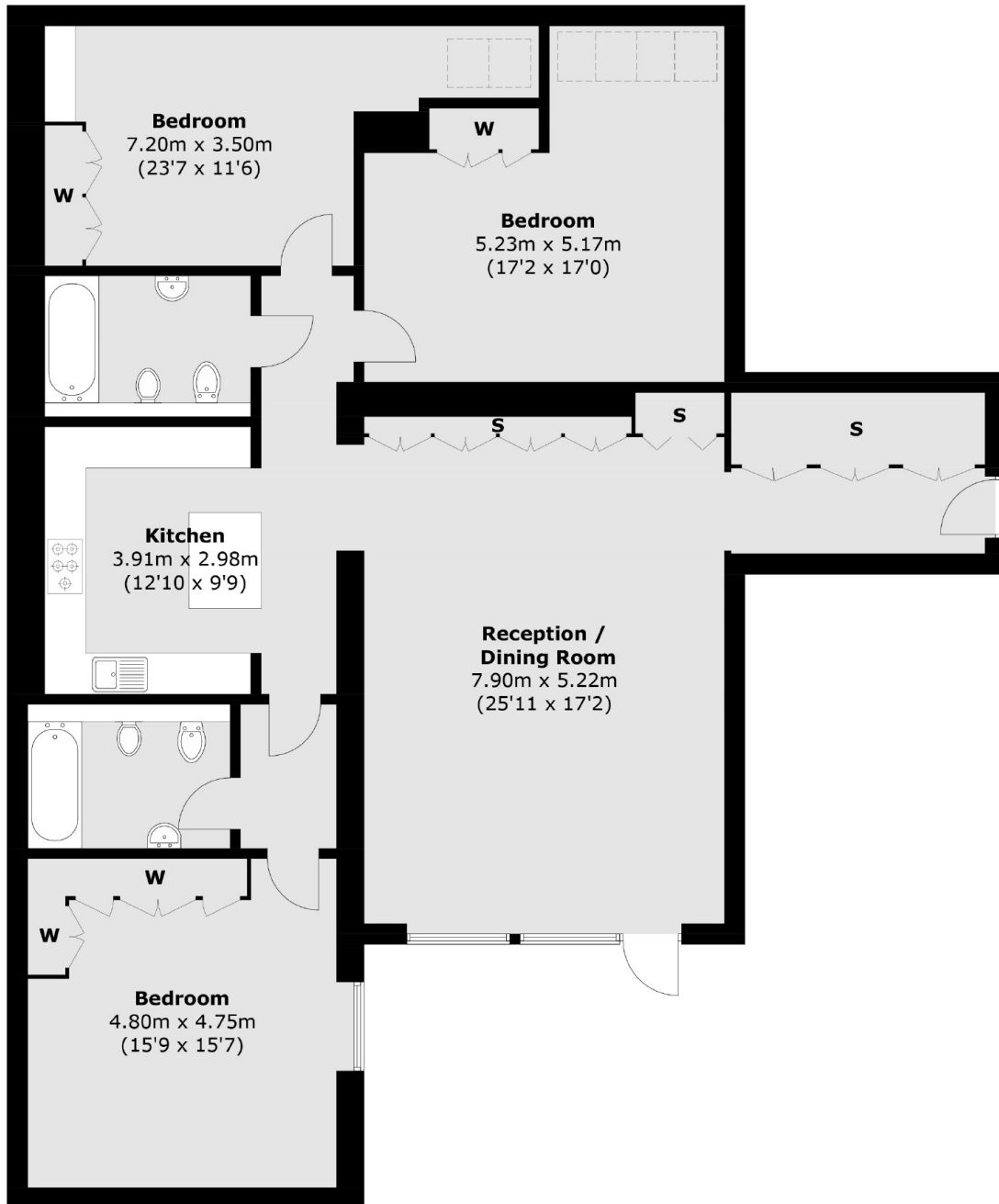
This three double bedroom flat is set within a secure gated development (with a porter and off street parking), with a generous reception room and private decked terrace. The property offers three spacious double bedrooms, two bathrooms and plenty of storage throughout.

Salem Road is ideally located for the varied amenities within Bayswater & Notting Hill. Westbourne Grove is within close proximity providing further shops, bars and restaurants. Queensway & Bayswater stations are moment away as is Paddington Station.

### Features

- Three Double Bedrooms
- Two Bathrooms
- Spacious Reception Room
- Separate Kitchen
- Off Street Parking
- Private Decked Terrace

Salem Road,  
London, W2



### Ground Floor

Total area (approx.): 157.8 sq. m (1,698.5 sq. ft)