



St. Ervans Road, W10

£580,000

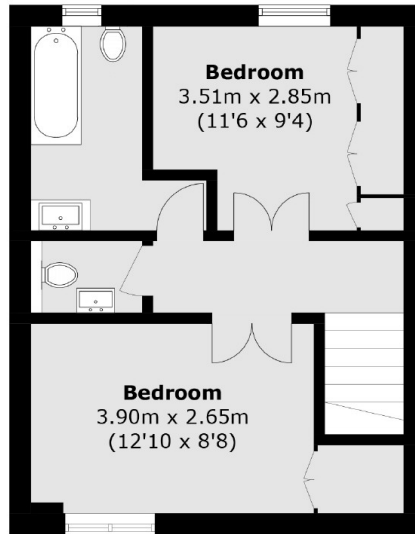
A split level apartment in a purpose built apartment with its own front door. Set over the top two floors and measuring 885 Sq.Ft , with a feature glass staircase, two double bedrooms, spacious reception room, separate kitchen, family bathroom and a separate WC. There is a large attic space accessed via a ladder with windows and local precedent to convert into a third bedroom (subject to the usual consents).

St. Ervans Road off the fashionable Golborne Road and close to Portobello Road, each with plenty of local shops, boutiques and restaurants. Three tube stations including Westbourne Park (Circle and Hammersmith and City lines) are nearby and a good choice of buses swiftly link with the heart of London.

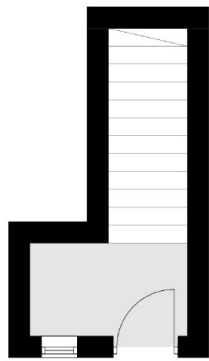
Features

- Two Bedrooms
- Split Level
- Own Front Door
- Separate Kitchen
- Close to Amenities
- RBKC

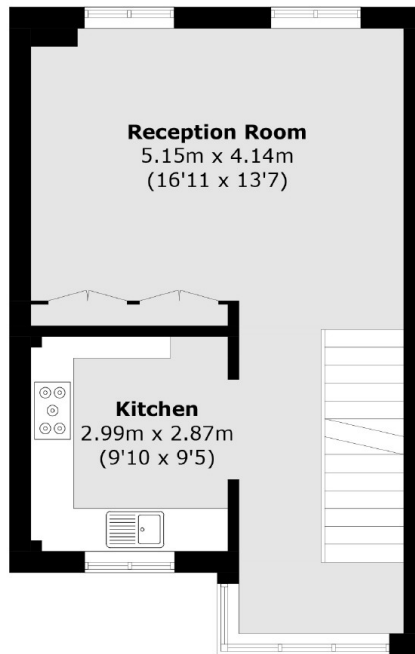
St. Ervans Road,
London, W10



Second Floor



Ground Floor



First Floor

Total area (approx.): 82.3 sq. m (885.8 sq. ft)