



Pembridge Gardens, W2

£525,000

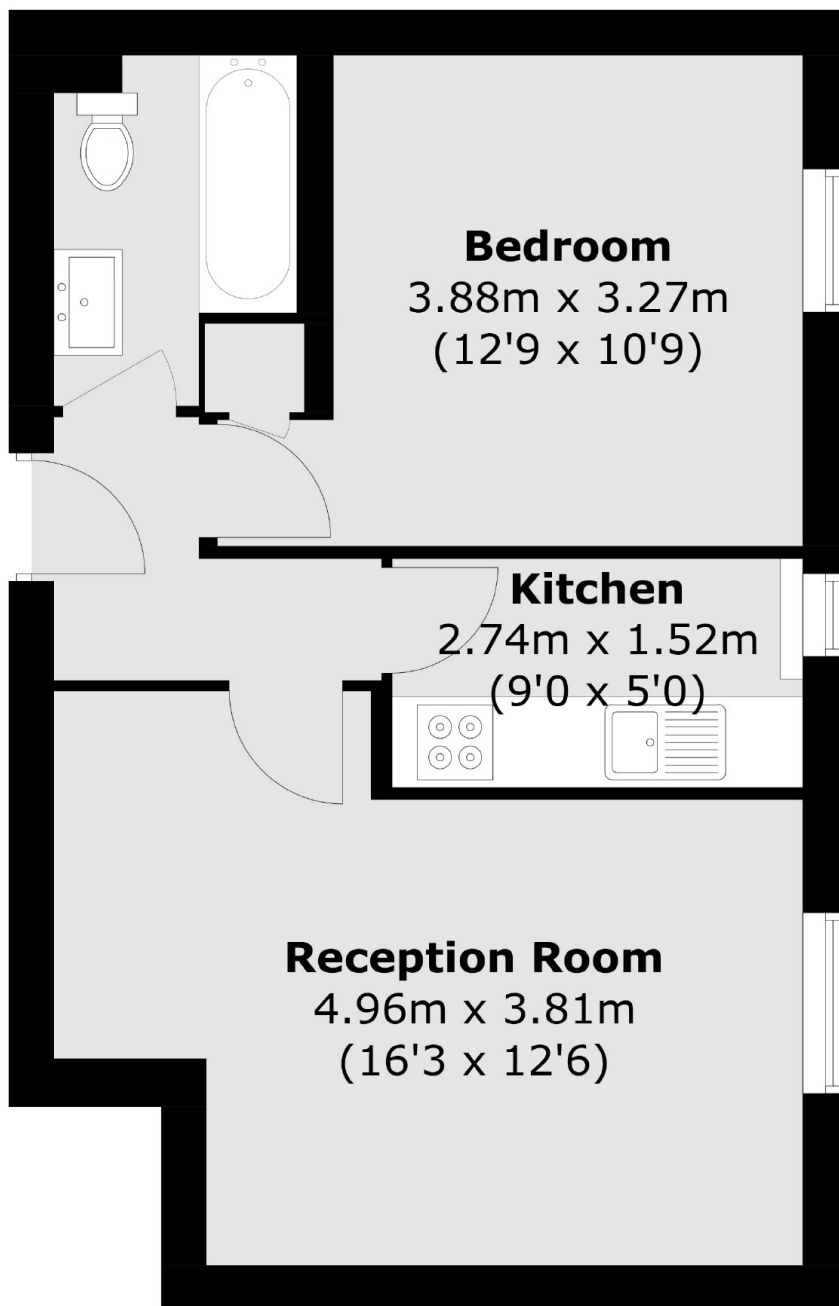
A one bedroom apartment in a white stucco fronted Victorian period conversion (with a lift). The property has a spacious reception, a separate kitchen, and wooden flooring throughout.

Pembridge Gardens is conveniently located for the amenities of Notting Hill Gate and Portobello Road Market. It is also within close proximity to Hyde Park and plenty of local transport links.

Features

- One Double Bedroom
- Wood Flooring
- Separate Kitchen
- Lift
- Close to Amenities
- Notting Hill

Pembridge Gardens,
London, W2



Total area (approx.): 38.6 sq. m (415.4 sq. ft)