



Royal Crescent Mews, W11 £930,000

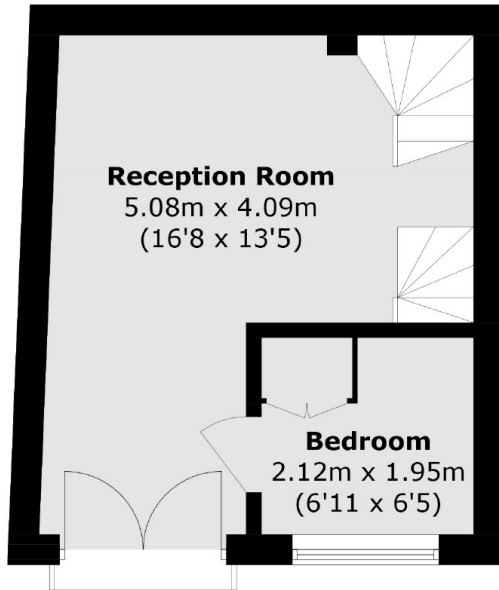
A charming two bedroom freehold mews house in prime Holland Park. There is a semi-open plan modern kitchen with room to dine on the ground floor, a spacious reception room on the first floor, and the principal bedroom with fitted wardrobes and an en suite on the top floor.

Located off Holland Park Avenue, Royal Crescent Mews is a short distance from bus links, and underground and overground stations. Westfield shopping centre, the green spaces of Holland Park and a variety of shops and restaurants are also nearby.

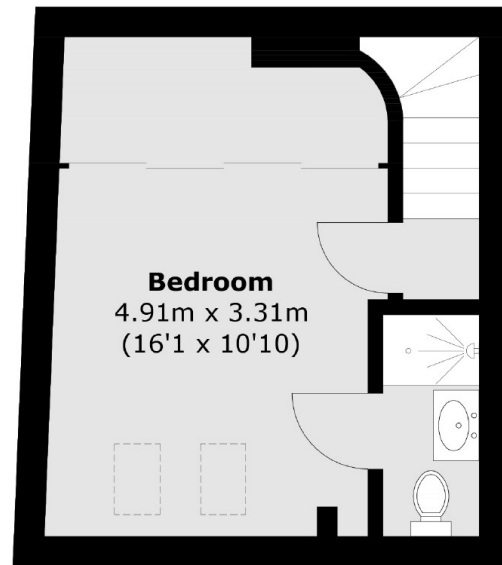
Features

- Freehold Mews House
- Two Bedrooms
- Two Bathrooms (One En Suite)
- Eat In Kitchen
- Prime Location
- Close To Amenities

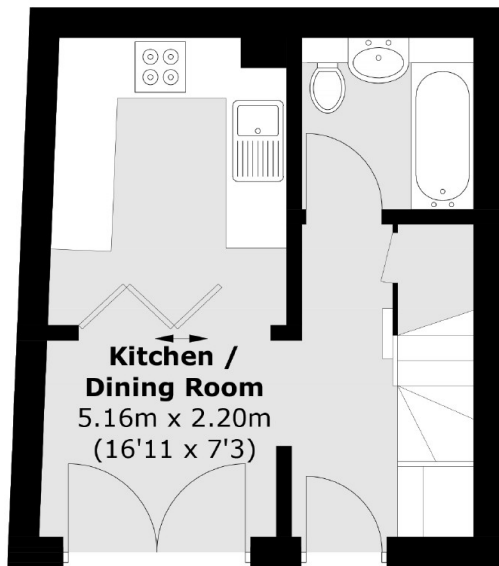
Royal Crescent Mews, London, W11



First Floor



Second Floor



Ground Floor

Total area (approx.): 63.0 sq. m (678.1 sq. ft)