



Holland Park Gardens, W14 £1,350,000

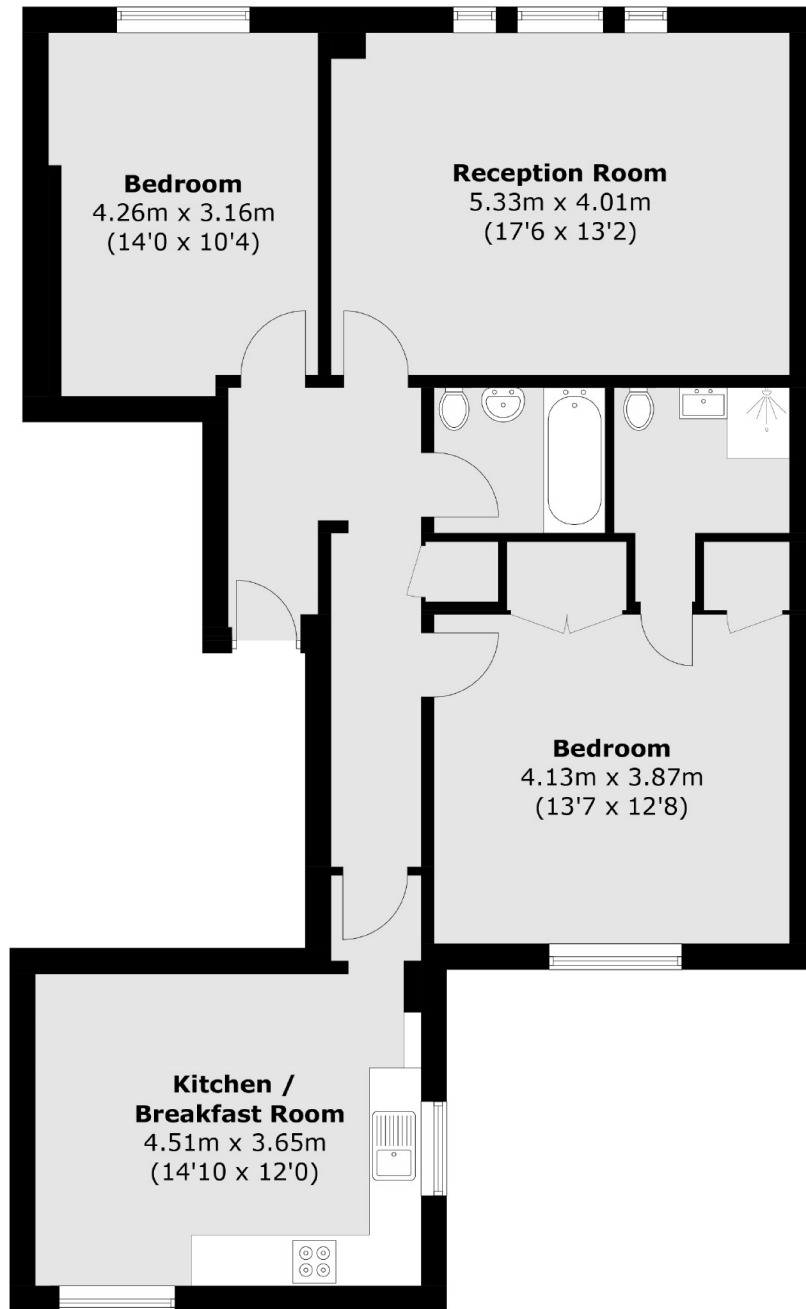
A bright, spacious and well presented, two bedroom apartment on the second floor of a Victorian conversion. There is a west facing reception room, a modern separate kitchen with room to dine, and built in wardrobes and an en suite in the principal bedroom.

The property is well situated on a residential street in Holland Park with local shops, cafés, the manicured green spaces of Holland Park and Holland Park tube station only a short distance away.

Features

- Two Bedrooms
- Two Bathrooms
- Spacious Reception
- Eat in Kitchen
- Storage
- Holland Park

Holland Park Gardens, London, W14



Total area (approx.): 91.1 sq. m (980.6 sq. ft)

Dexters

Westbourne Grove
120 Westbourne Grove
London
W11 2RR
Sales
020 7313 3600

Energy Rating: C. We aim to make our particulars both accurate and reliable. However they are not guaranteed; nor do they form part of an offer or contract. If you require clarification on any points then please contact us, especially if you're traveling some distance to view. Please note that appliances and heating systems have not been tested and therefore no warranties can be given as to their good working order.

 **RICS** | Regulated
Estate Agent
and Letting Agent

dexters.co.uk