



Ladbroke Grove, W10

£740,000

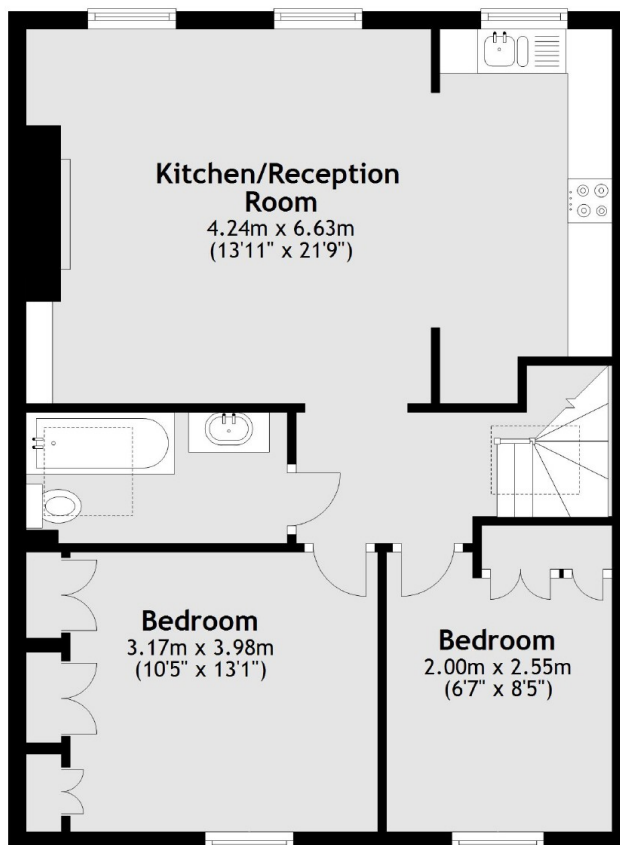
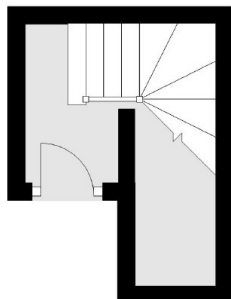
A recently refurbished two double bedroom apartment on the top floor (entered on the second floor) of a white stucco fronted Victorian conversion, ideal for a first time buyer or investment purchase.

Ladbroke Grove is in the heart of North Kensington, with plenty of amenities nearby, including pubs, shops and restaurants on Golborne Road and Portobello Road and Ladbroke Grove Underground a short walk away.

Features

- Two Double Bedrooms
- Open Plan
- Newly Refurbished
- Long Leasehold
- White Stucco Fronted
- Close to Amenities

Ladbroke Grove, London, W10



Total area: approx. 65.3 sq. metres (702.9 sq. feet)

Dexters

Westbourne Grove
120 Westbourne Grove
London
W11 2RR
Sales
020 7313 3600

Energy Rating: E. We aim to make our particulars both accurate and reliable. However they are not guaranteed; nor do they form part of an offer or contract. If you require clarification on any points then please contact us, especially if you're traveling some distance to view. Please note that appliances and heating systems have not been tested and therefore no warranties can be given as to their good working order.

 **RICS** | Regulated
Estate Agent
and Letting Agent

dexters.co.uk