



Brewster Gardens, W10

£1,400,000

A four bedroom mid terraced freehold house in North Kensington, with scope to refurbish and extend (STPP) and create a long term family home.

Brewster Gardens is near to the transport links, shops and restaurants in and around North Kensington, Ladbroke Grove and Portobello Road. Westfield Shopping Centre is close by, as are the green spaces of Wormwood Scrubs.

Features

- Four Bedroom House
- Double Reception Room
- Three Floors
- Private Patio Garden
- Juliette Balcony
- North Kensington



Brewster Gardens, W10

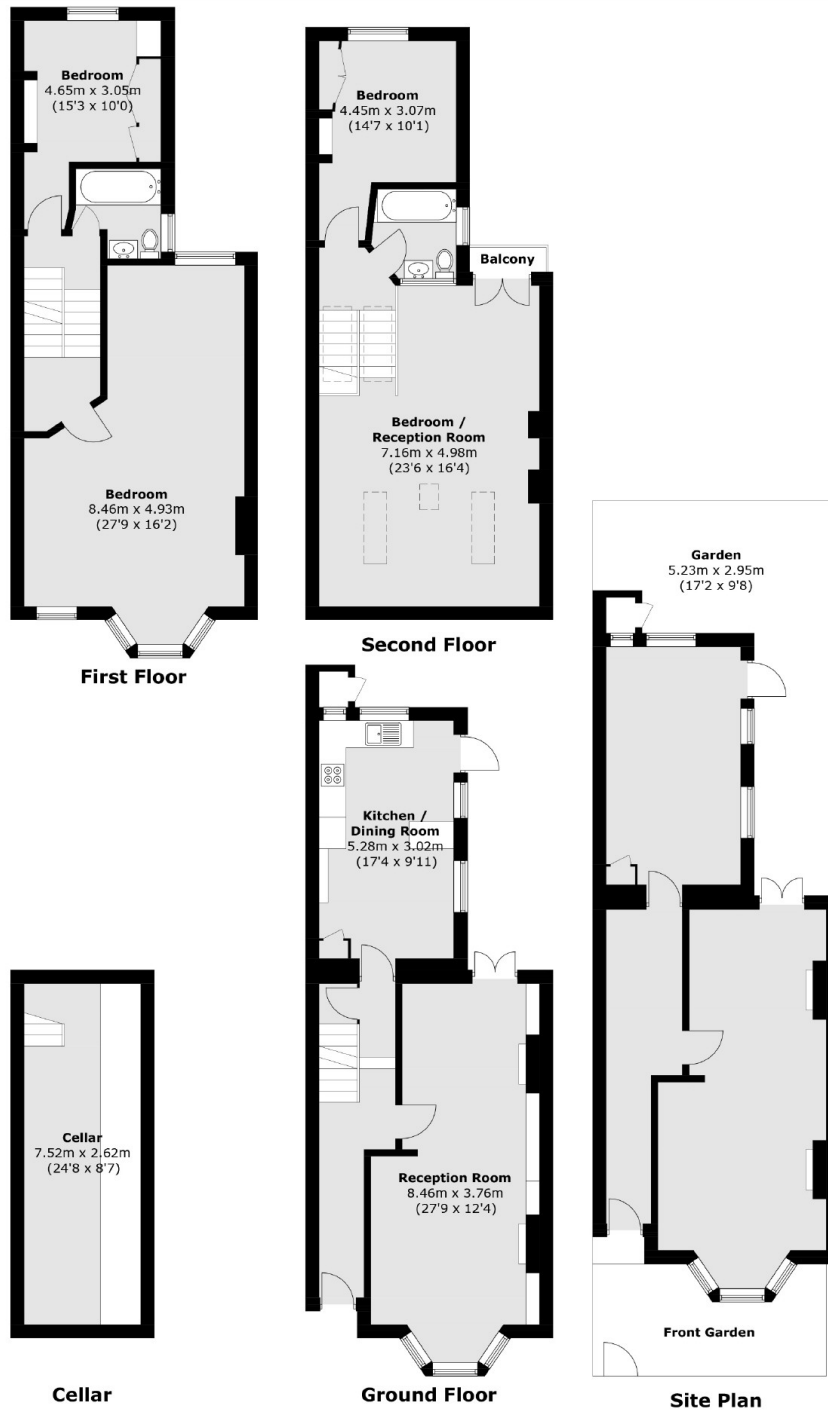
Measuring almost 2,000 Sq.Ft and arranged over three floors with double reception on the ground floor, with original features including wooden floors, a feature fireplace and a bay window. To the rear is an eat in kitchen leading to the South-West facing patio garden.

Upstairs there are four double bedrooms, of which the principal bedroom spans the space of two rooms and on the top floor is a similarly spacious reception / bedroom with Juliette balcony.

The property has been in the same family for forty years and is presented in good order, however an incoming buyer will enjoy refurbishing and extending (subject to the usual consents) and creating a long term family home.



Brewster Gardens, London, W10



Total area (approx.): 181.6 sq. m (1,955.0 sq. ft)

External Store: 0.5 sq. m (5.4 sq. ft)

Balcony: 0.9 sq. m (10 sq. ft)