



Kensington High Street, W8 £850,000

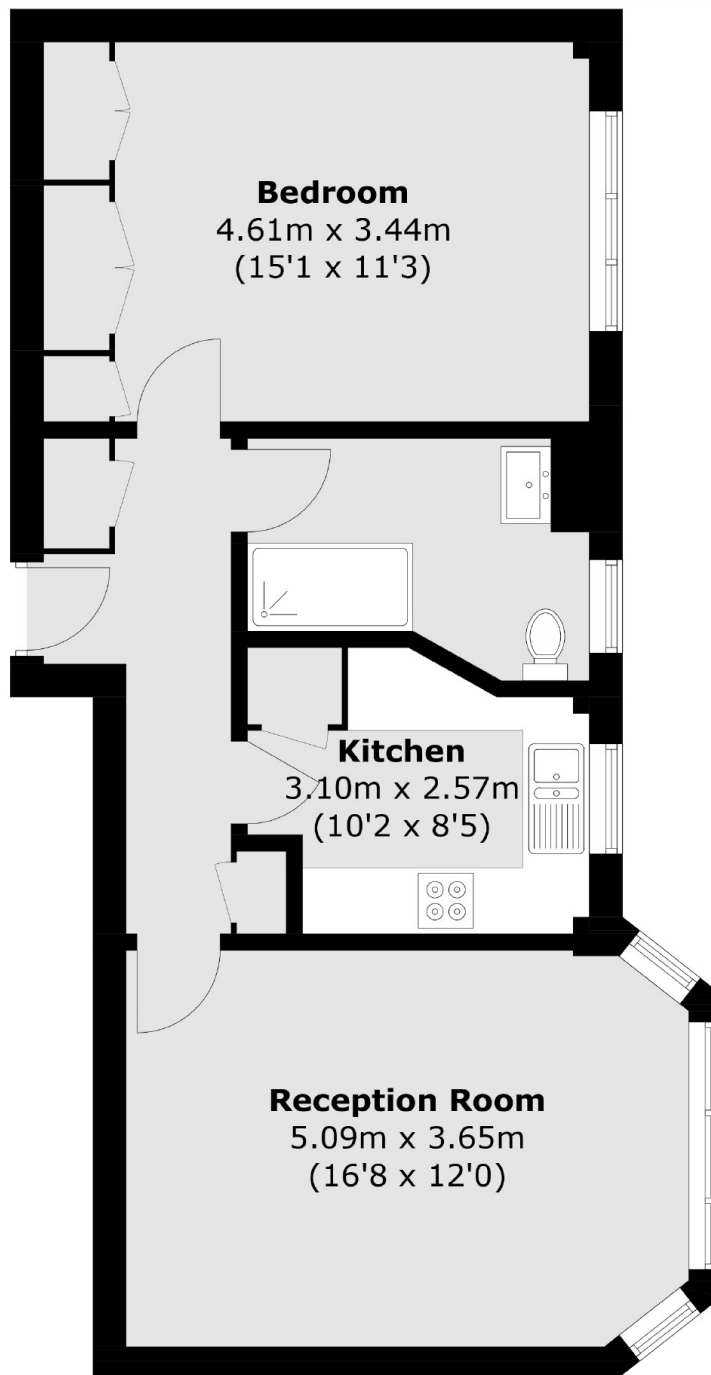
A beautifully presented one bedroom apartment on the first floor (with lift) of a well maintained, art-deco portered building. The property has a modern separate kitchen, a spacious reception with room to dine, and plenty of storage throughout.

The property is situated on Kensington High Street providing access to the local shops, restaurants and boutiques, as well as the transport links of Kensington High Street underground station. The green open spaces of Holland Park are almost on your doorstep.

Features

- One Bedroom
- Wooden Flooring
- Separate Kitchen
- Lift
- Porter
- Close to Amenities

Kensington High Street,
London, W8



Total area (approx.): 56.9 sq. m (612.5 sq. ft)