



## Sussex Gardens, W2

£1,200,000

A modern and spacious two double bedroom apartment with high ceilings, wooden floors and its own private entrance. Finished to a high standard, the property is on the doorstep of Hyde Park and local transport.

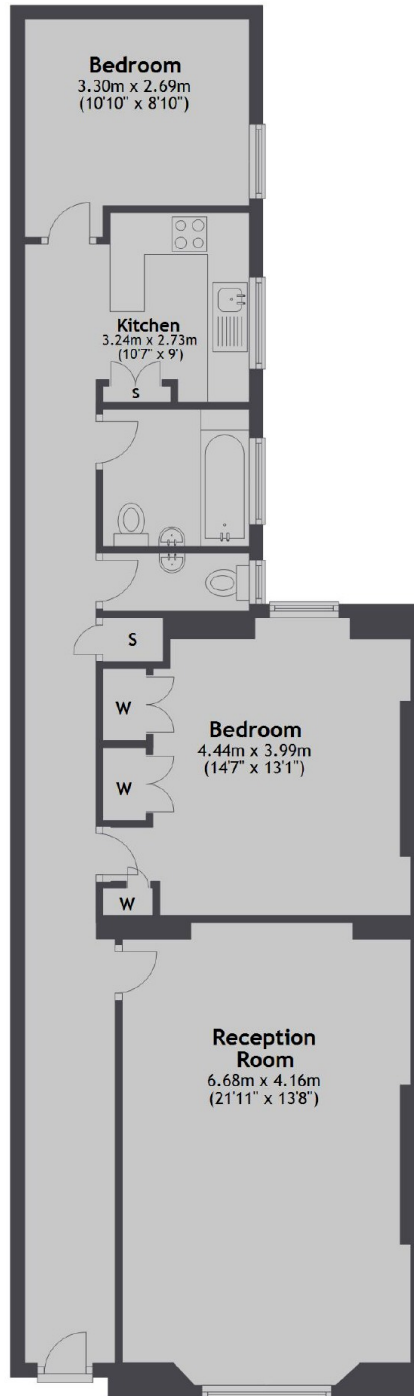
Sussex Gardens is within easy reach of Notting Hill and the West End. The nearest stations are Lancaster Gate and Paddington, offering easy access across London and to Heathrow.

### Features

- Wooden Flooring
- Two Double Bedrooms
- High Ceilings
- Close To Transport
- Own Front Door
- Separate Kitchen

# Sussex Gardens, London, W2

## Ground Floor



Total area: approx. 89.2 sq. metres (959.9 sq. feet)

# Dexters

Westbourne Grove  
120 Westbourne Grove  
London  
W11 2RR

Sales  
020 7313 3600

Energy Rating: E. We aim to make our particulars both accurate and reliable. However they are not guaranteed; nor do they form part of an offer or contract. If you require clarification on any points then please contact us, especially if you're traveling some distance to view. Please note that appliances and heating systems have not been tested and therefore no warranties can be given as to their good working order.

 **RICS** | Regulated  
Estate Agent  
and Letting Agent

[dexters.co.uk](http://dexters.co.uk)