



Westbourne Grove Terrace, W2 £750,000

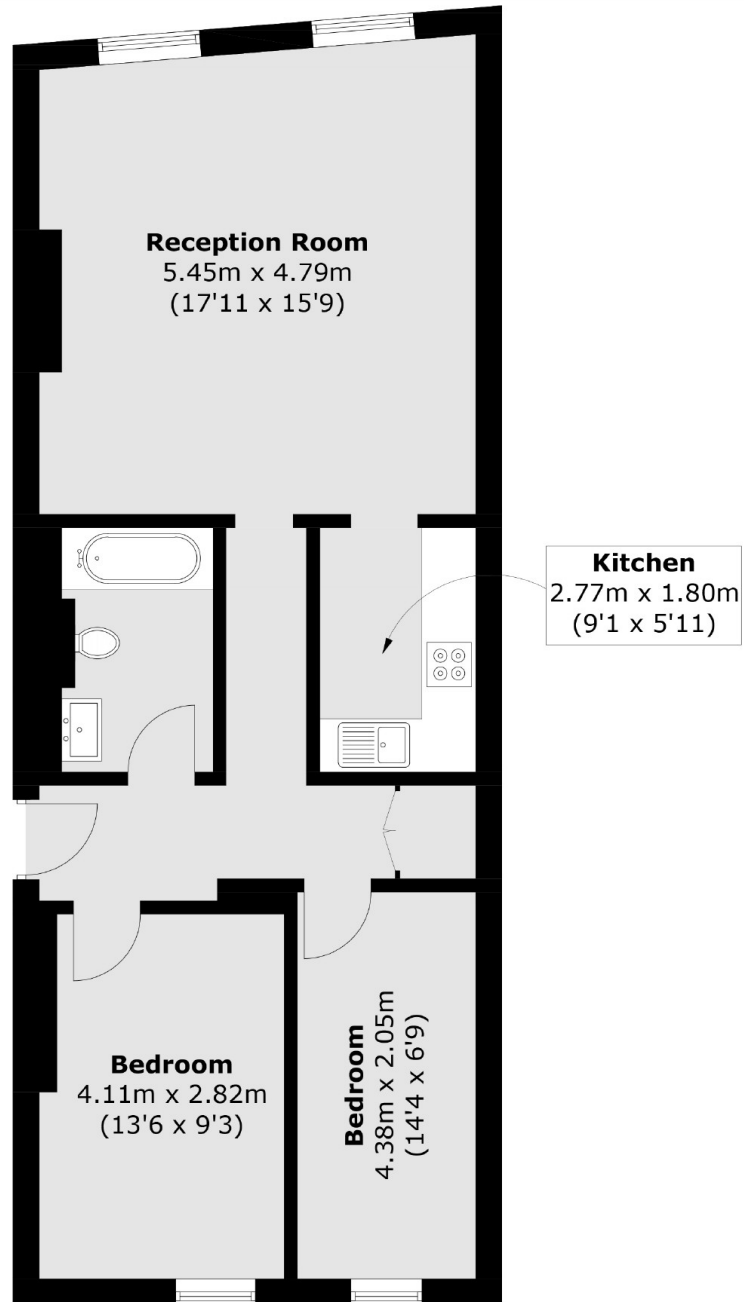
A two bedroom apartment on the third floor (with lift), of a white stucco fronted period building on a cul-de-sac road. The property is well presented, has a spacious reception room with room to dine, a modern fitted kitchen and has a long lease.

Westbourne Grove Terrace is a sought-after residential road off Westbourne Grove, giving easy access to Paddington, Bayswater, the green spaces of Hyde Park and plenty of chic restaurants and pubs in Notting Hill.

Features

- Two Bedrooms
- Separate Kitchen
- Spacious Reception
- Lift
- Notting Hill
- Close To Amenities

Westbourne Grove Terrace, London, W2



Third Floor

Total area (approx.): 67.7 sq. m (728.7 sq. ft)