



Bracewell Road, W10

£900,000

Dexters



Bracewell Road, W10

This three bedroom, split level apartment is presented in excellent condition throughout. The property has plenty of natural light and is offered with a share of freehold.

This attractive split level apartment offers a superb living space with a separate reception room, leading to high specification, modern eat in kitchen and private patio garden. The ground floor has two bedrooms and a three piece shower room.

The impressive principal bedroom occupies the entire lower ground floor level and has a large en suite bathroom and plenty of storage space.

The property is located on the ever-popular Bracewell Road in North Kensington, W10. There are underground stations close by providing easy access to central London.

Bracewell Road is a sought after residential address close to both Latimer Road and White City stations, as well as the local shops and restaurants of Portobello Road. It offers easy access to and from the lively central London.

Features

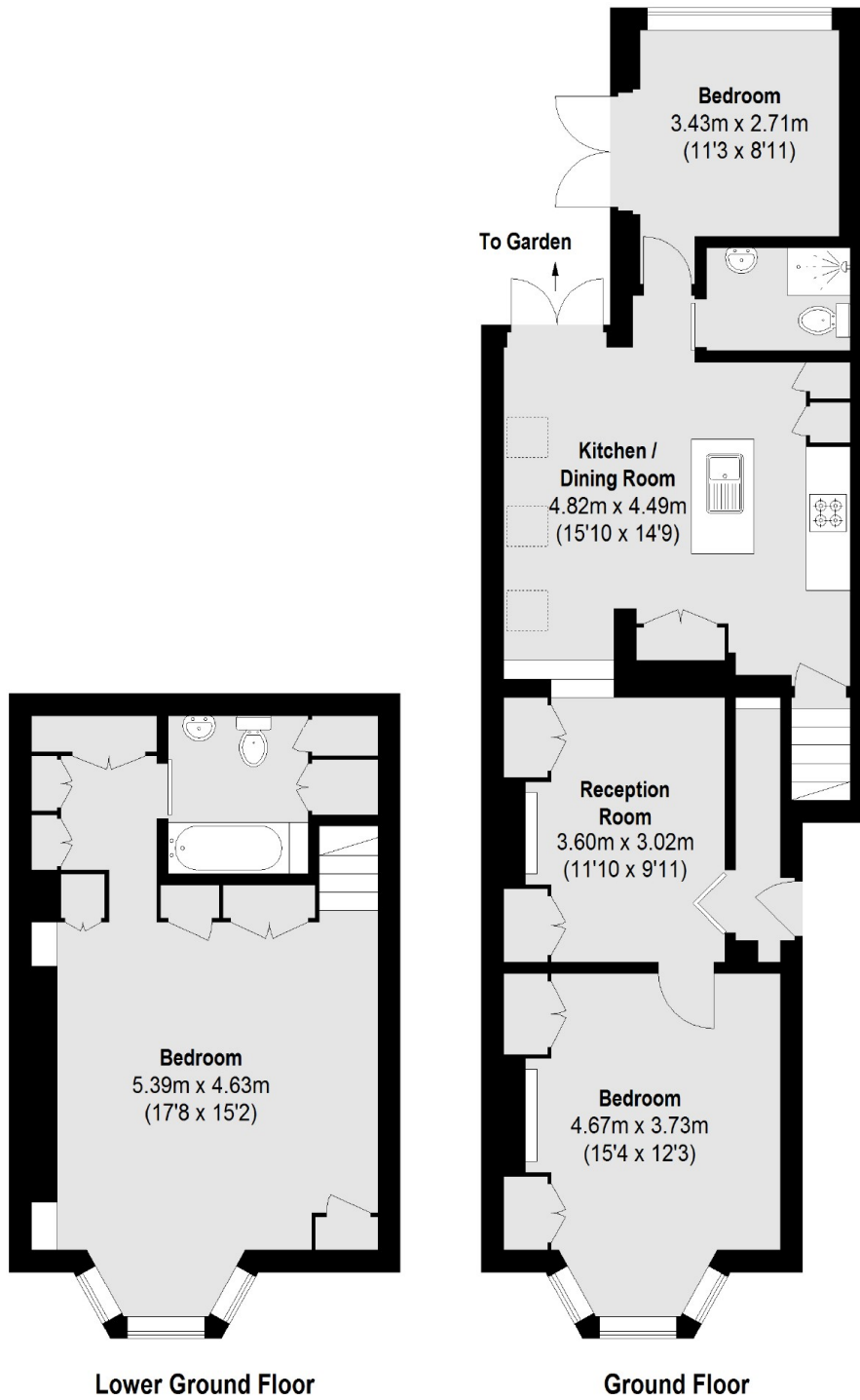
- Three Double Bedrooms
- Share Of Freehold
- North Kensington
- Private Patio
- Close To Amenities







Bracewell Road,
London, W10



Total area (approx.): 101.83 sq. m (1096 Sq. ft)