



Elsham Road, W14

£625,000

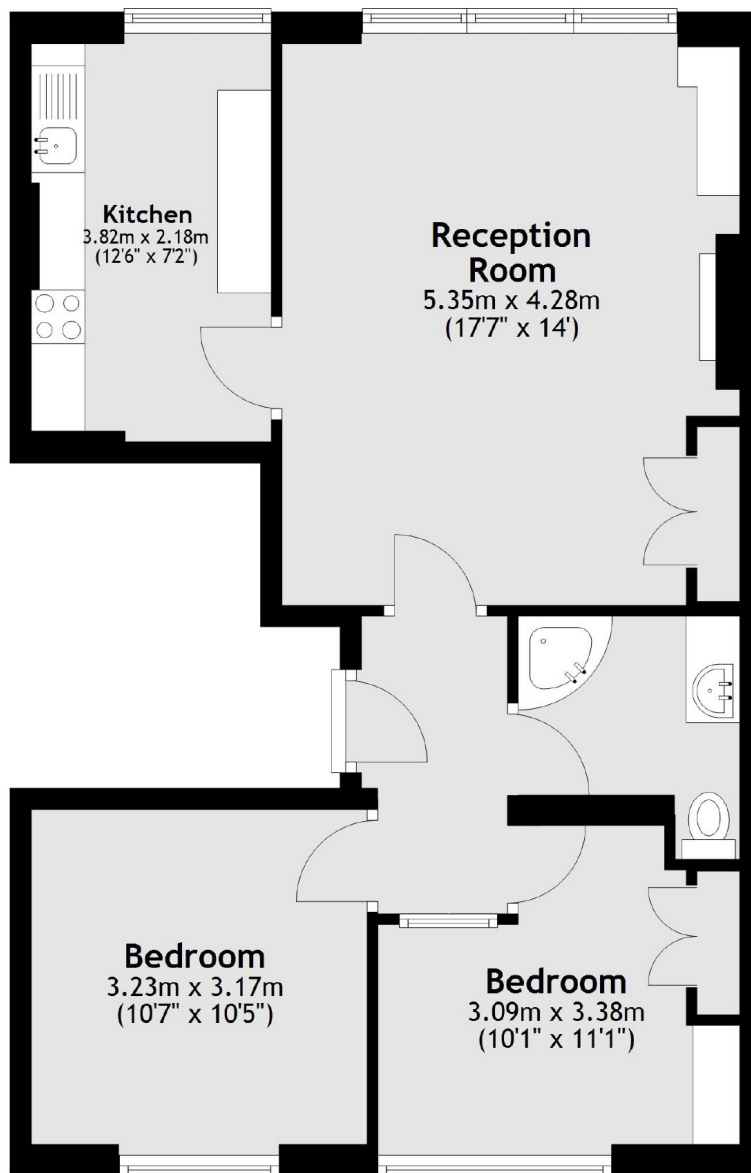
A first floor, two bedroom apartment in a Victorian period conversion. The property has a spacious reception with room to dine, a separate kitchen, and access to the communal garden.

Elsham Road is a popular tree-lined street, on the edge of the Royal Borough of Kensington & Chelsea. Benefitting from the many local amenities of both High Street Kensington and Westfield shopping centre. It is a short distance from Holland Park and close to the tube stations of High Street Kensington, Holland Park and Kensington Olympia.

Features

- First Floor Flat
- Two Bedroom
- Spacious Reception
- Separate Kitchen
- Share Of Freehold
- Communal Garden

Elsham Road,
London, W14



Total area: approx. 60.0 sq. metres (645.5 sq. feet)

Dexters

Westbourne Grove
120 Westbourne Grove
London
W11 2RR
Sales
020 7313 3600

Energy Rating: C. We aim to make our particulars both accurate and reliable. However they are not guaranteed; nor do they form part of an offer or contract. If you require clarification on any points then please contact us, especially if you're traveling some distance to view. Please note that appliances and heating systems have not been tested and therefore no warranties can be given as to their good working order.

 **RICS** | Regulated
Estate Agent
and Letting Agent

dexters.co.uk