



## Durham Terrace, W2

£999,950

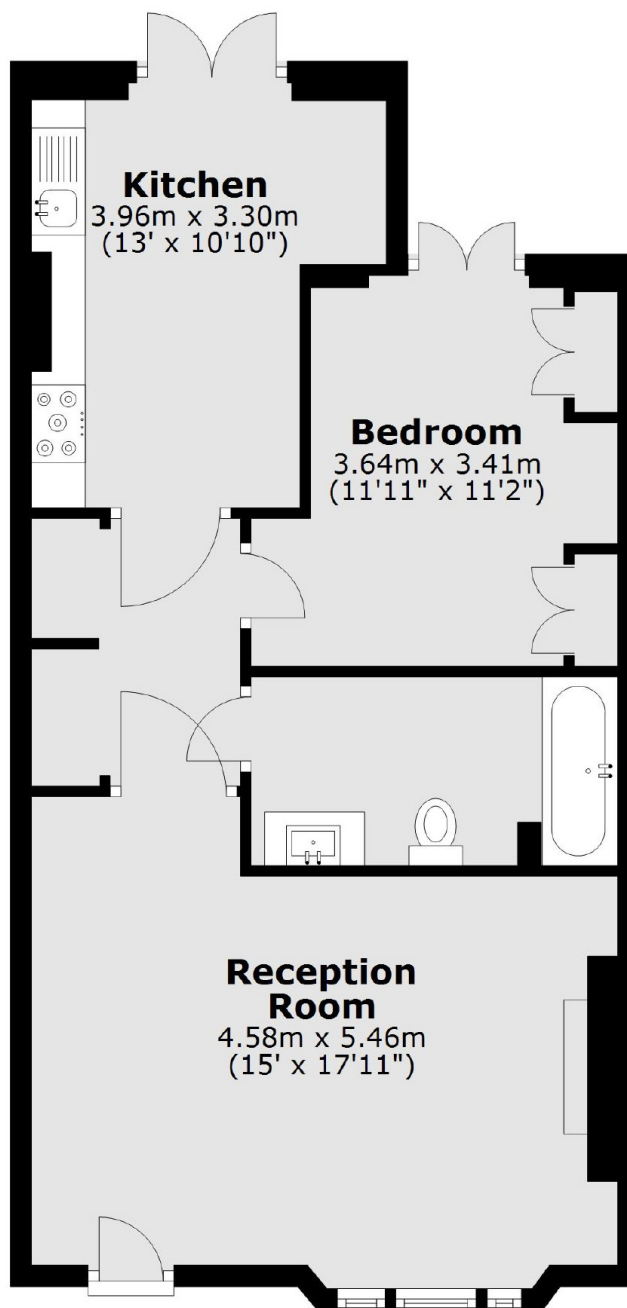
A beautifully presented and high specification garden flat in a Victorian conversion. There is a spacious reception with feature fireplace and room to dine, a separate modern kitchen leading to the well maintained garden and a spacious bedroom also leading to the garden.

Durham Terrace is a tree lined residential road, Ideally located for the shops and restaurants on Westbourne Grove including Planet Organic and Farmacy restaurant.

### Features

- One Bedroom
- South Facing Garden
- Wooden Flooring
- Modern Kitchen
- Prime Road
- Lease Expires 1/4/2978

Durham Terrace,  
London, W2



Total area: approx. 56.7 sq. metres (610.8 sq. feet)