



Addison Road, W14

£1,600,000

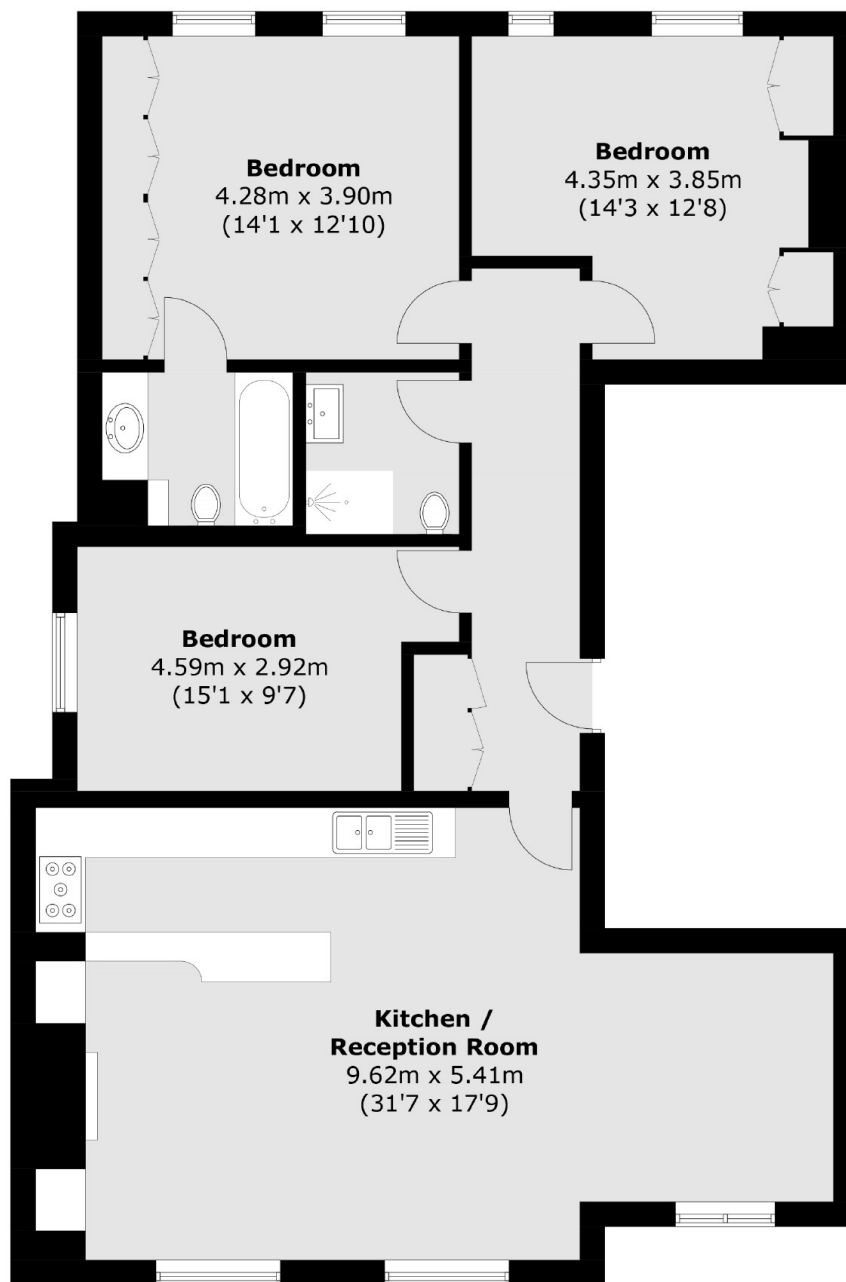
A three bedroom apartment on the second floor of an imposing Victorian mansion block. There is a spacious open plan reception with a modern kitchen with breakfast bar, room to dine, and wooden flooring throughout. The principal bedroom has built in wardrobes and an en suite.

The property is ideally situated on one of the most prestigious streets in Holland Park with easy access to Westfield shopping centre Holland Park Station and the manicured green spaces of Holland Park.

Features

Three Bedroom
Lateral Apartment
Open Plan
Wooden Flooring
Share Of Freehold
Holland Park

Addison Road,
London, W14



Total area (approx.): 111.3 sq. m (1,198.0 sq. ft)

Dexters

Westbourne Grove
120 Westbourne Grove
London
W11 2RR
Sales
020 7313 3600

Energy Rating: C. We aim to make our particulars both accurate and reliable. However they are not guaranteed; nor do they form part of an offer or contract. If you require clarification on any points then please contact us, especially if you're traveling some distance to view. Please note that appliances and heating systems have not been tested and therefore no warranties can be given as to their good working order.

 **RICS** | Regulated
Estate Agent
and Letting Agent

dexters.co.uk