



Colville Road, W11

£750,000

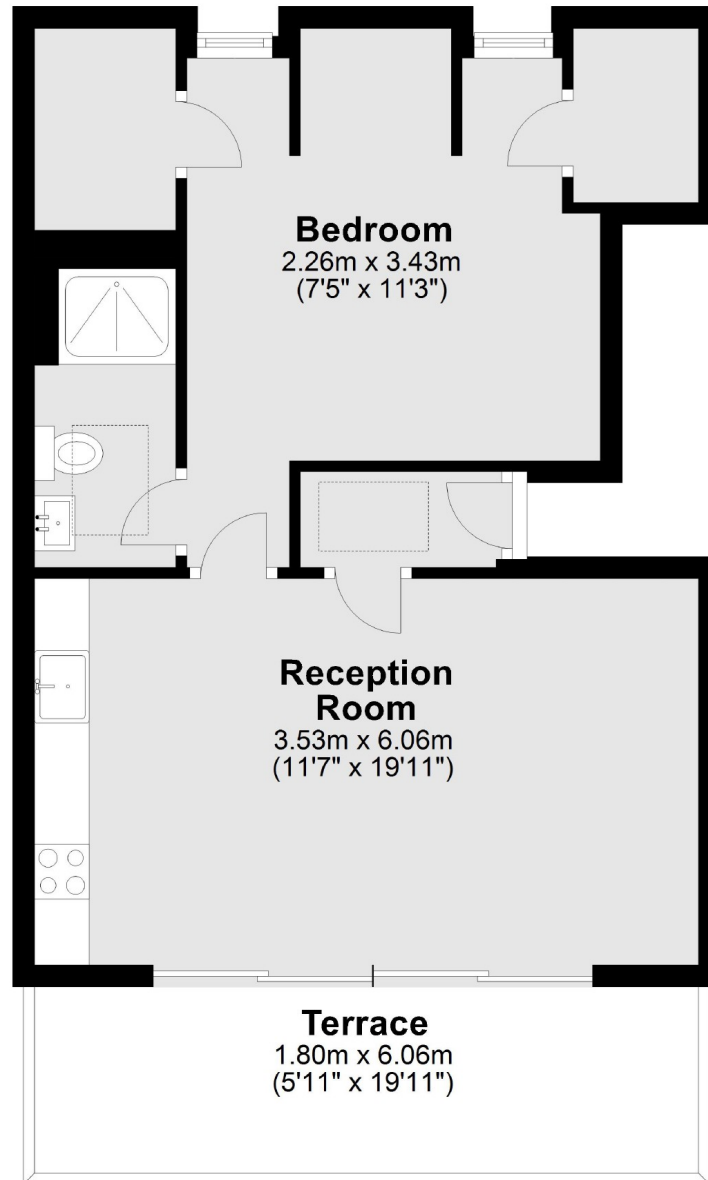
A recently refurbished one bedroom apartment on the top floor of a period conversion. The property has a spacious open plan reception with a modern fitted kitchen, room to dine and access to a private balcony.

Colville Road is found just off Westbourne Grove and is well located for the many shops & restaurants on Westbourne Grove, Portobello Road and Notting Hill Gate Underground station.

Features

- One Bedroom
- Excellent Condition
- Balcony
- Open Plan
- Share Of Freehold
- Close To Amenities

Colville Road,
London, W11



Total area: approx. 47.1 sq. metres (507.2 sq. feet)