



Colville Road, W11

£900,000

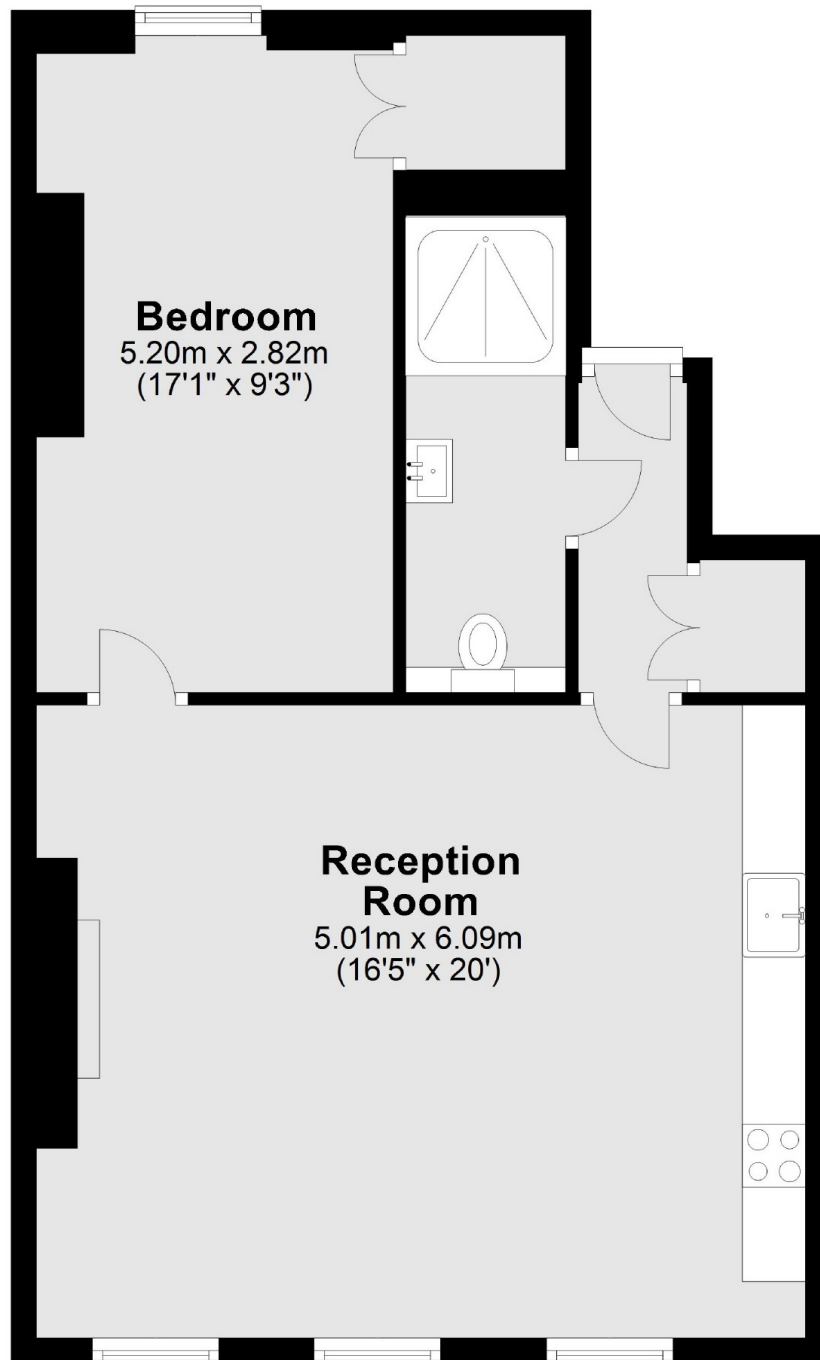
A recently refurbished one bedroom apartment on the second floor of an attractive period conversion. The property has a spacious open plan reception with a modern fitted kitchen, room to dine, and wooden flooring throughout.

Colville Road is found just off Westbourne Grove and is well located for the many shops & restaurants on Westbourne Grove, Portobello Road and Notting Hill Gate Underground station.

Features

- One Bedroom
- Excellent Condition
- Wooden Flooring
- Open Plan
- Share Of Freehold
- Close To Amenities

Colville Road,
London, W11



Total area: approx. 56.2 sq. metres (605.2 sq. feet)

Dexters

Westbourne Grove
120 Westbourne Grove
London
W11 2RR
Sales
020 7313 3600

Energy Rating: B. We aim to make our particulars both accurate and reliable. However they are not guaranteed; nor do they form part of an offer or contract. If you require clarification on any points then please contact us, especially if you're traveling some distance to view. Please note that appliances and heating systems have not been tested and therefore no warranties can be given as to their good working order.

 **RICS** | Regulated
Estate Agent
and Letting Agent

dexters.co.uk