



Hereford Road, W2

£1,500,000

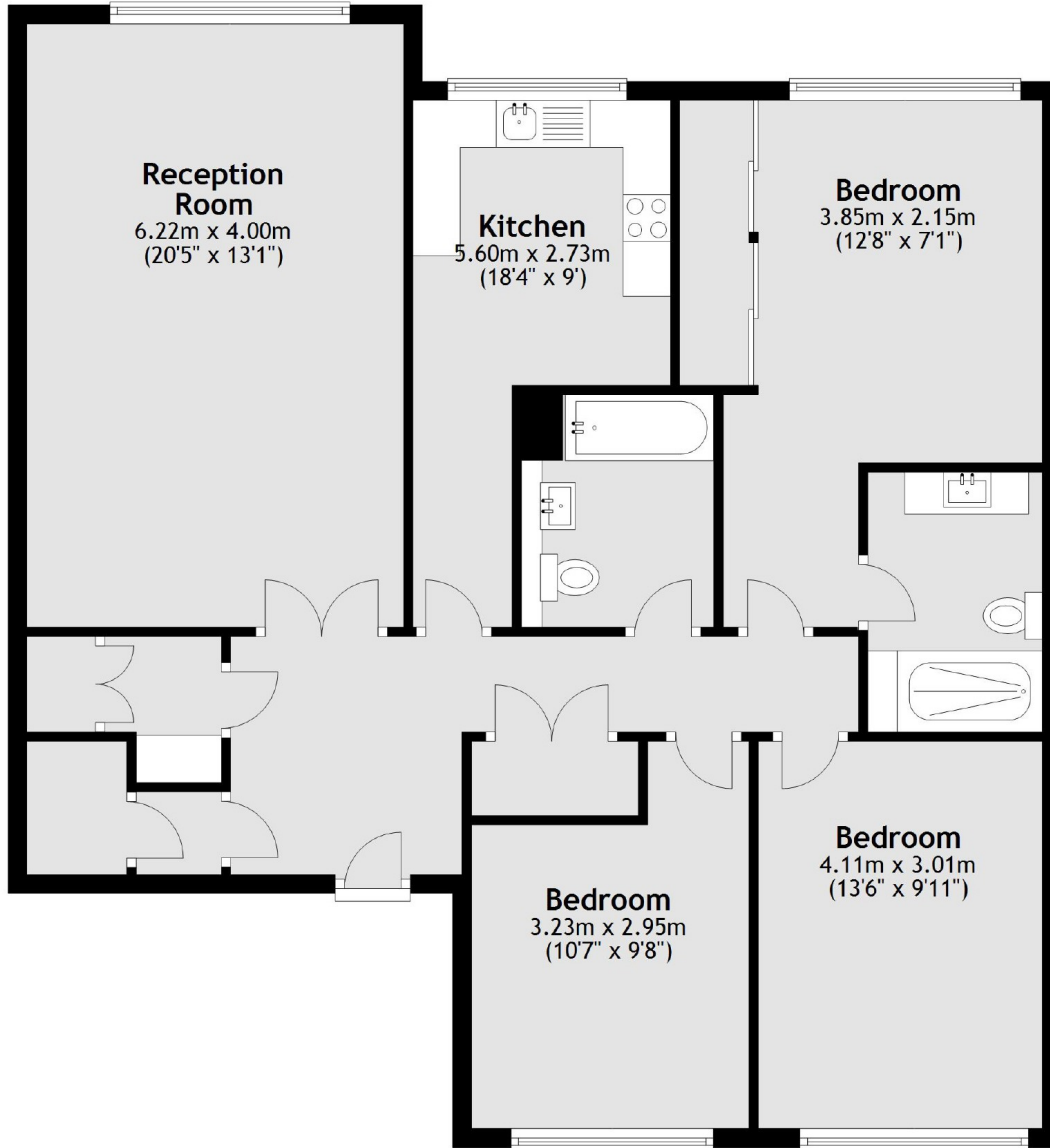
A modern three bedroom lateral apartment in a portered block, with lift and parking space. The property has a spacious reception with wooden flooring and room to dine, a separate modern kitchen, and an en suite in the principal bedroom.

Hereford Road is ideally located just off Westbourne Grove and has all of the local boutiques and restaurants of Notting Hill on the doorstep. Bayswater, Queensway and Notting Hill Gate Tube Stations are all within 0.3 miles.

Features

- Three Bedroom
- Two Bathrooms
- Separate Kitchen
- Porter
- Recently Refurbished
- Secure Parking Space

Hereford Road,
London, W2



Total area: approx. 108.2 sq. metres (1165.0 sq. feet)