



## Rabbit Row, W8

£1,350,000

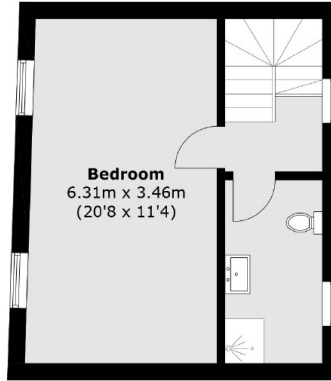
A two bedroom mews house in need of refurbishment and potential reconfiguration (subject to consent). The property has a reception with a separate kitchen, terrace and balcony on the first floor, and both bedrooms spanning the first and second floors.

Rabbit Row is conveniently located on the Kensington and Notting Hill borders and within walking distance of Hyde Park and Kensington Gardens. Close by are plenty of restaurants, shops and boutiques.

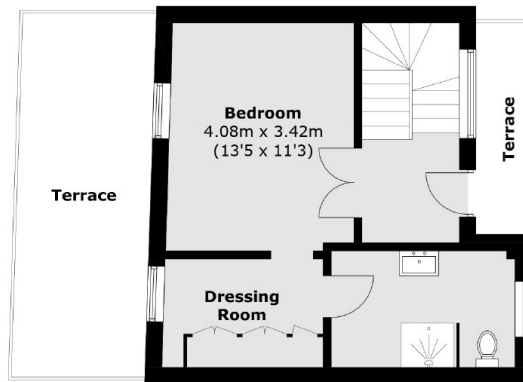
### Features

Freehold House  
Roof Terrace  
Unmodernised  
Refurbishment And  
Reconfigure  
Kensington

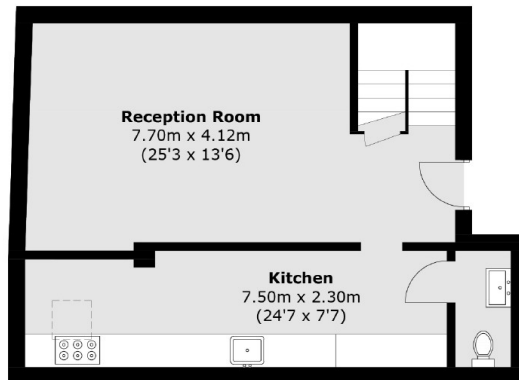
# Rabbit Row, London, W8



**Second Floor**



**First Floor**



**Ground Floor**

Total area (approx.): 117.2 sq. m (1,261.5 sq. ft)  
Terrace: 19.3 sq. m (207.7 sq. ft)