



## Latimer Road, W10

£750,000

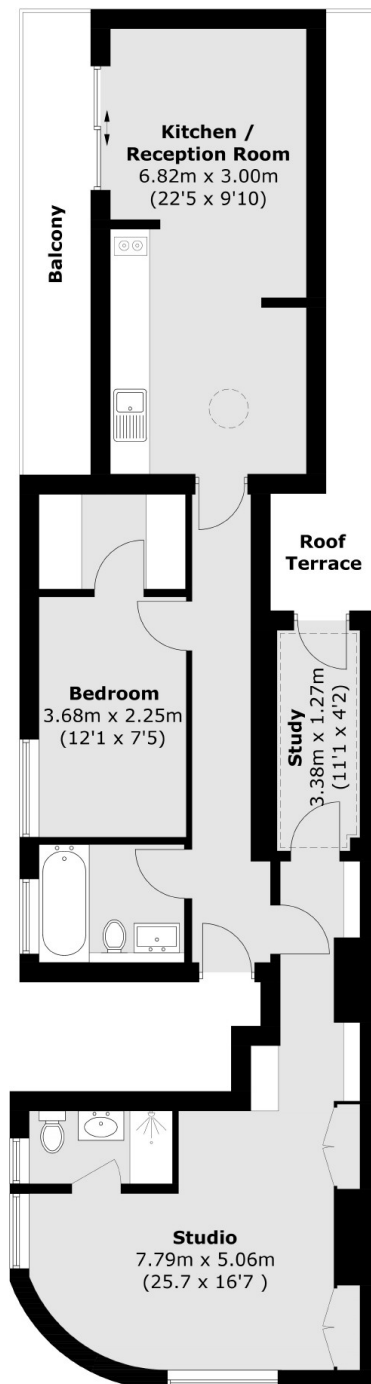
A larger than average average two bedroom, two bathroom apartment with two private balconies, open plan living space, ample storage large windows and wooden flooring throughout. The layout of this property makes an ideal investment allowing two separate living spaces.

Latimer Road is a quiet street near to the wide array of shops available on Portobello Road, Golborne Road and Westfield, the green spaces of Wormwood Scrubs are close by and there's plenty of transport links giving access across the city.

### Features

- Two Double Bedrooms
- Two Bathrooms
- Terrace
- Open Plan
- Wooden Flooring
- Lease Expires 01/01/3001

Latimer Road,  
London, W10



Total area (approx.): 75.9 sq. m (817.0 sq. ft)  
Balcony / Roof Terrace area (approx.): 15.9 sq. m (171.1 sq. ft)

**Dexters**

Westbourne Grove  
120 Westbourne Grove  
London  
W11 2RR  
Sales  
020 7313 3600

Energy Rating: E. We aim to make our particulars both accurate and reliable. However they are not guaranteed; nor do they form part of an offer or contract. If you require clarification on any points then please contact us, especially if you're traveling some distance to view. Please note that appliances and heating systems have not been tested and therefore no warranties can be given as to their good working order.

 **RICS** | Regulated  
Estate Agent  
and Letting Agent

[dexters.co.uk](http://dexters.co.uk)