



Edgware Road, W2

£245,000

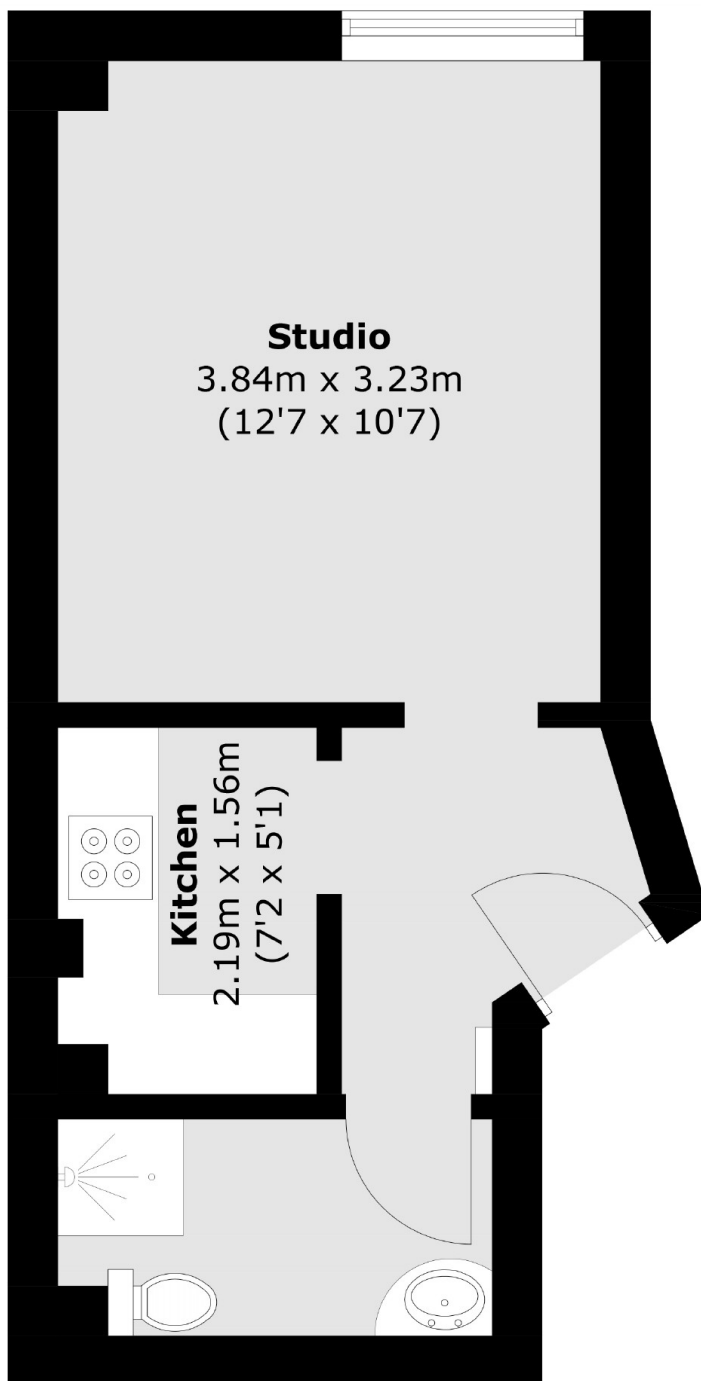
A studio apartment in a purpose built block. The property has a separate kitchen, a long lease and is an ideal investment opportunity.

Park West is local to the transport links of Marble Arch, Edgware Road and Paddington providing the opportunity for both underground and overground travel.

Features

- Studio
- Purpose Built
- Separate Kitchen
- Lift
- Hyde Park

Edgware Road,
London, W2



Total area (approx.): 23.7 sq. m (255.1 sq. ft)

Dexters

Westbourne Grove
120 Westbourne Grove
London
W11 2RR

Sales
020 7313 3600

Energy Rating: B. We aim to make our particulars both accurate and reliable. However they are not guaranteed; nor do they form part of an offer or contract. If you require clarification on any points then please contact us, especially if you're traveling some distance to view. Please note that appliances and heating systems have not been tested and therefore no warranties can be given as to their good working order.

 **RICS** | Regulated
Estate Agent
and Letting Agent

dexters.co.uk