



Celbridge Mews, W2
£1,650,000



Celbridge Mews, W2

A stylish and charming three bedroom freehold house, with a garage, in a private cobbled mews between Royal Oak and Paddington.

The property is nestled in the corner of a private mews, accessed off Porchester Road, with the entrance on the ground floor of a three story building.

The open plan kitchen, reception and dining room spans the footprint of the property and makes an ideal entertaining space, with dark wooden floors, exposed brickwork, a high specification kitchen.

There are two generous principal bedrooms, with en suite bathrooms and built-in wardrobes, plus a further double bedroom and separate family bathroom. The spacious garage has direct access into the house, room for an SUV and a spiral staircase wine cellar.

Celbridge Mews is well placed for the shops, restaurants and bars on Queensway and Westbourne Grove. Royal Oak Underground Station is within close proximity, with Paddington Station also nearby.

Features

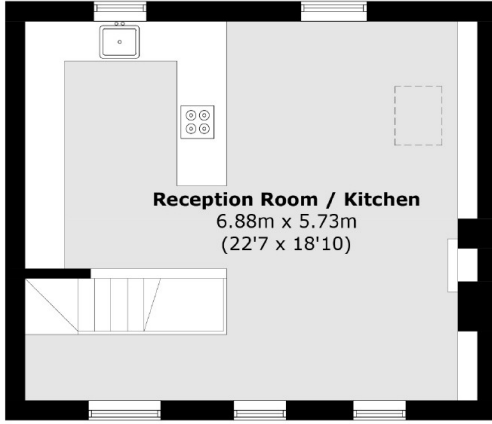
- Freehold House
- Three Bedrooms
- Three Bathrooms
- Garage
- Quiet Cobbled Mews
- Wine Cellar



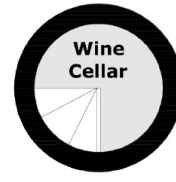




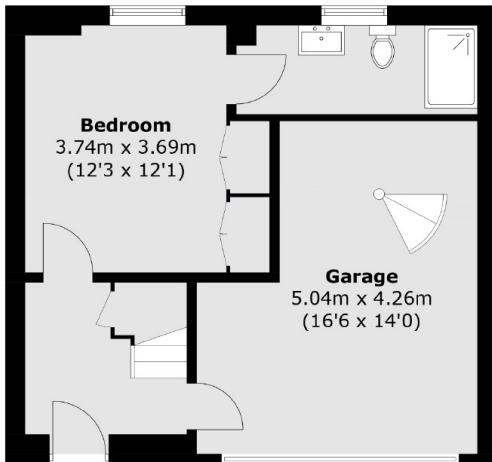
Celbridge Mews, London, W2



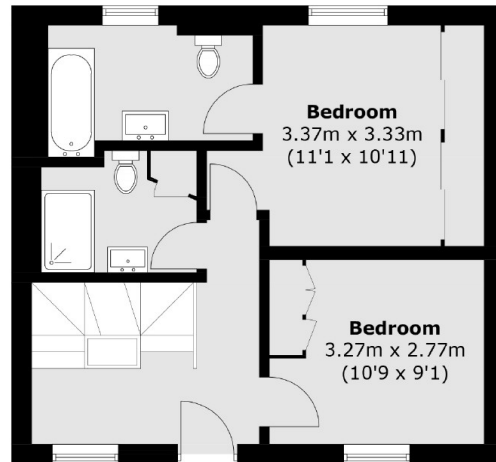
Second Floor



Cellar



Ground Floor



First Floor

Total area (approx.): 129.5 sq. m (1,393.9 sq. ft)
(Including Wine Cellar)