



## Vicarage Gate, W8

£799,950

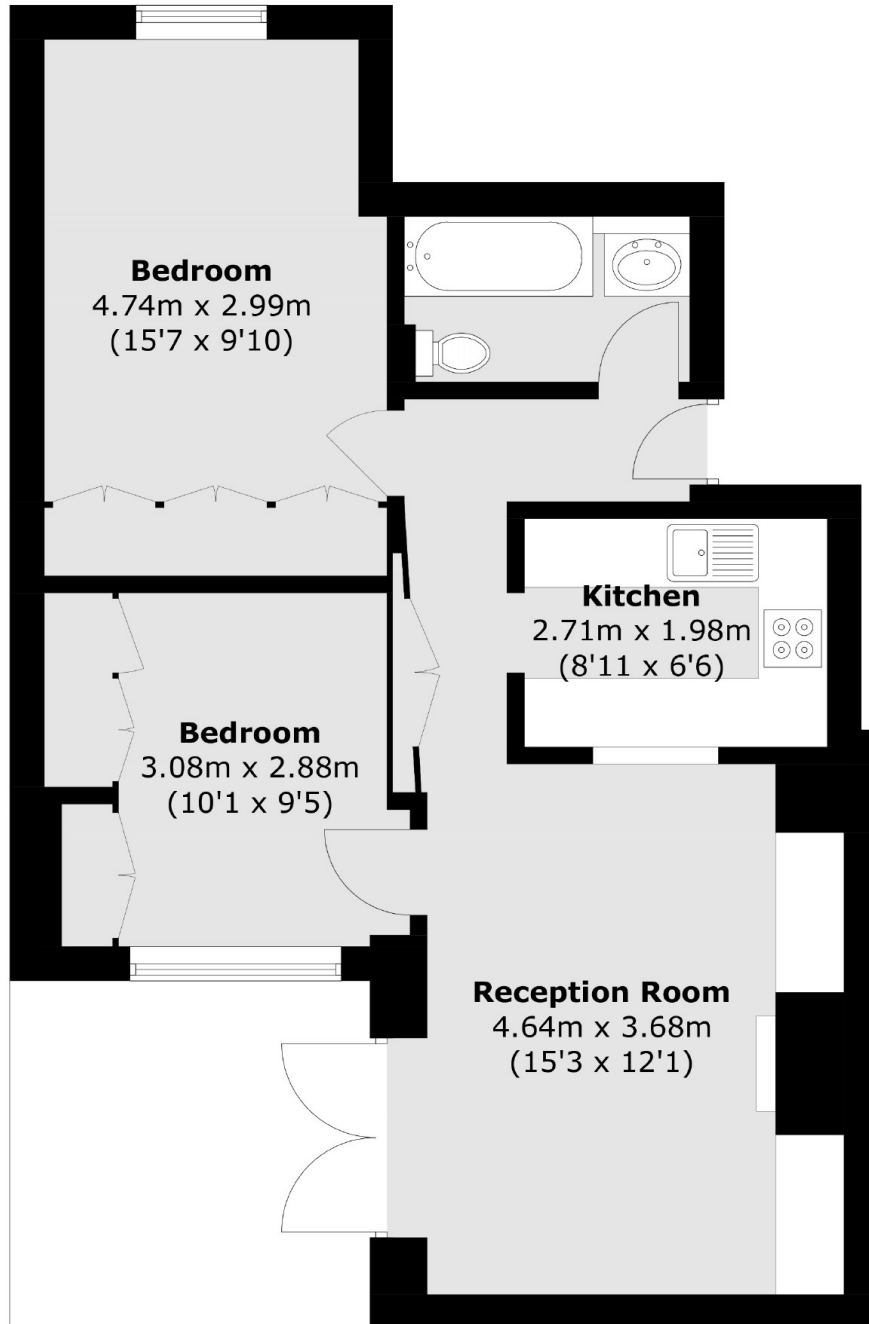
A two bedroom apartment within an imposing Victorian period conversion in W8. The property has a spacious reception room with direct access to a private patio, a separate kitchen, and built in wardrobes in the bedrooms.

Vicarage Gate is a prime residential road in the heart of Kensington, a short walk to Kensington High Street, with plenty of chic shops and restaurants and Hyde Park and Kensington Gardens are close by.

### Features

- Share Of Freehold
- Two Bedrooms
- Private Patio
- Lift
- Separate Kitchen
- Prime Location

Vicarage Gate,  
London, W8



Total area (approx.): 58.16 sq. m (626 sq. ft)