



## Airlie Gardens, W8

£1,000,000

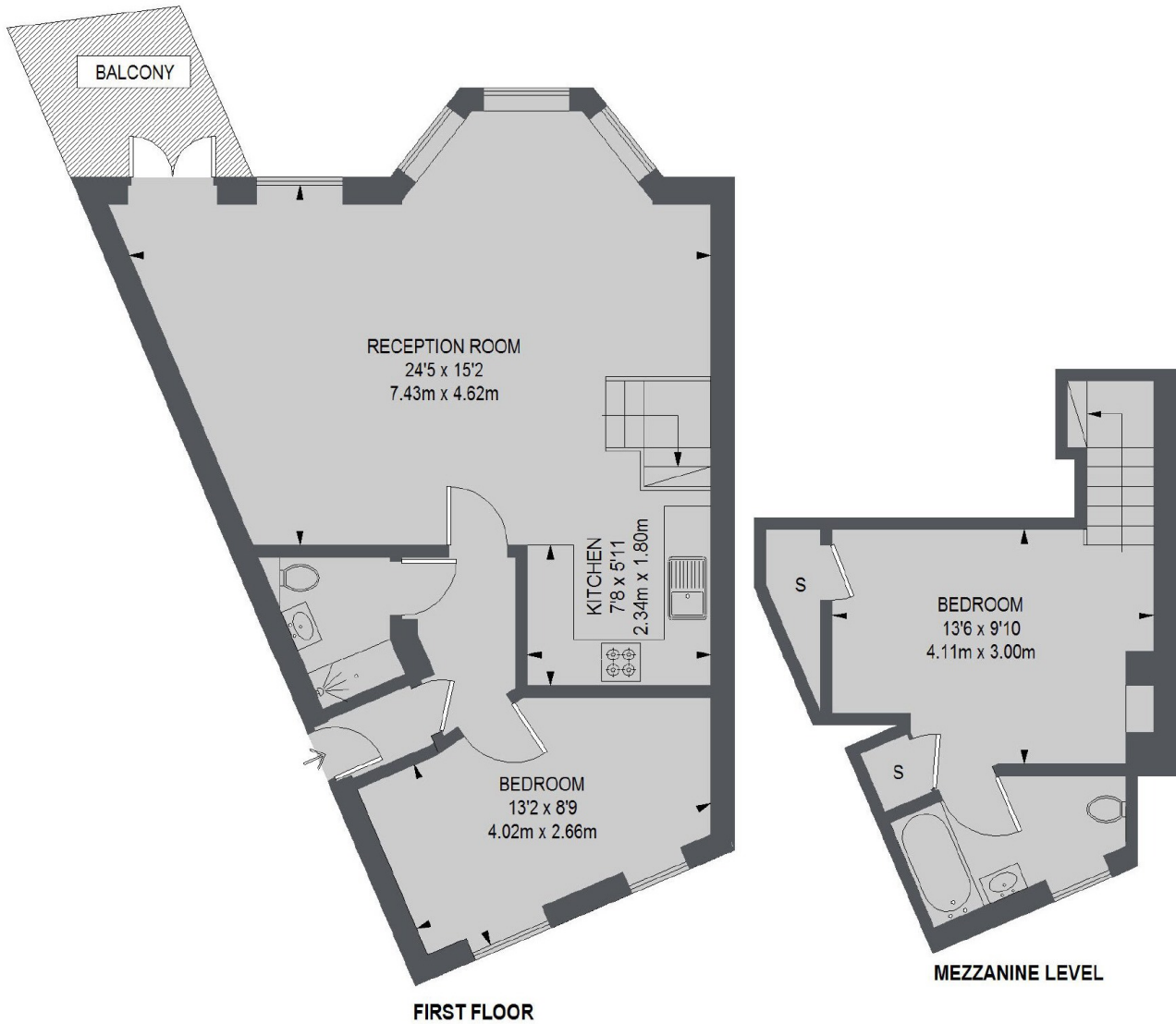
A charming two double bedroom apartment situated in prime Kensington. The property is offered with a share of the freehold and benefits from communal gardens at the rear.

Airlie Gardens is a sought after location providing close proximity to Notting Hill Gate, Kensington High Street, Holland Park and Hyde Park.

### Features

- Share Of Freehold
- Lift Access
- Balcony
- Two Bedrooms
- High Ceilings
- Two Bathrooms

# Airlie Gardens, London, W8



TOTAL APPROX. FLOOR AREA 811 SQ. FT. (75.37 SQ. M.)

**Dexters**

Westbourne Grove  
120 Westbourne Grove  
London  
W11 2RR

Sales  
020 7313 3600

Energy Rating: D. We aim to make our particulars both accurate and reliable. However they are not guaranteed; nor do they form part of an offer or contract. If you require clarification on any points then please contact us, especially if you're traveling some distance to view. Please note that appliances and heating systems have not been tested and therefore no warranties can be given as to their good working order.

 **RICS** Regulated  
Estate Agent  
and Letting Agent

[dexters.co.uk](http://dexters.co.uk)