



Lancaster Road, W11

£1,300,000

A two bedroom duplex apartment in a Victorian period conversion. The top floor has the spacious modern reception with access to both balconies and fitted kitchen. Both bedrooms have built in wardrobes and en suite.

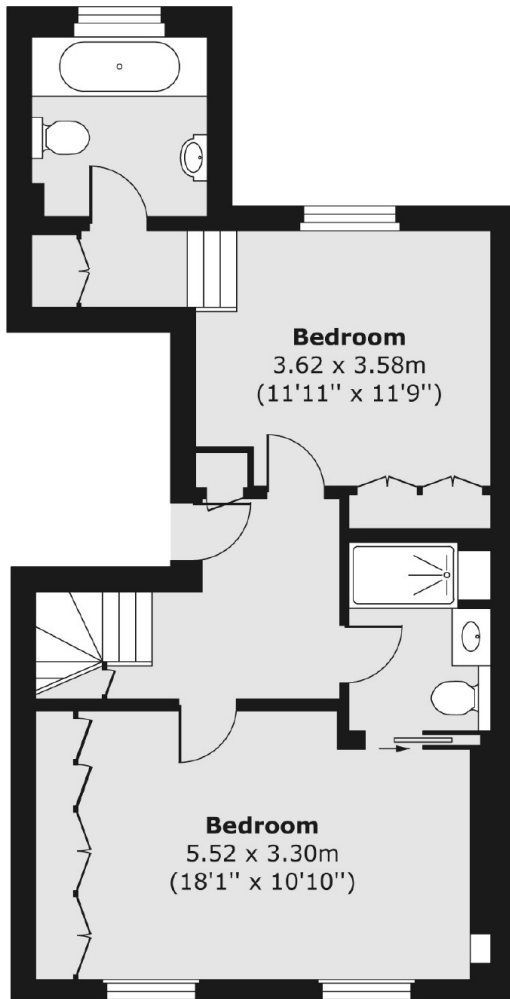
Lancaster Road is ideally located for the eclectic mix of amenities located on world famous Portobello Road and Westbourne Grove as well as Ladbroke Grove underground station.

Features

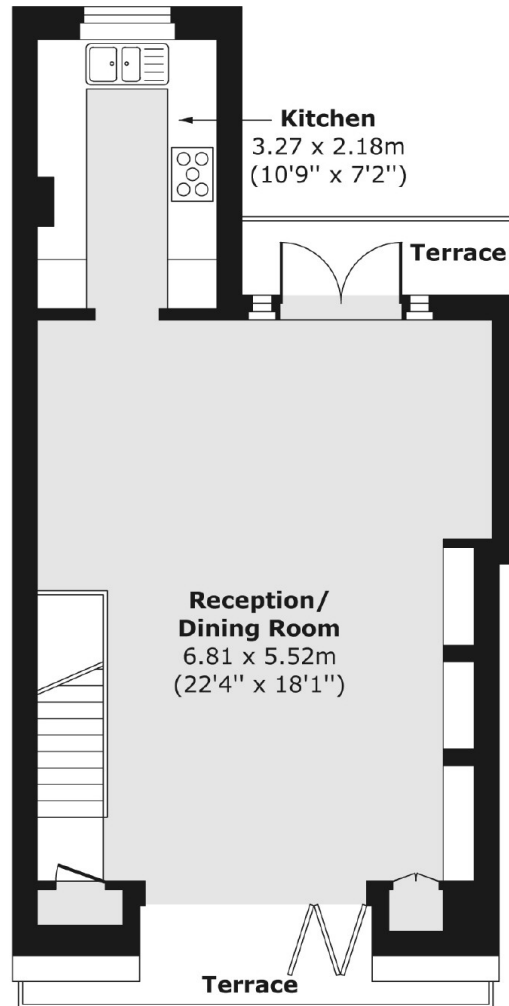
Two Bedroom
Two Balconies
Period Conversion
Duplex
Notting Hill

Lancaster Road, London, W11

Second Floor



Third Floor



Total area (approx.) 93.49 sq. m (1,006 sq. ft)
Terrace area (approx.) 7.14 sq. m (77 sq. ft)