



## Connaught Place, W2

£1,350,000

A large one-bedroom apartment with unencumbered south facing views over 350 acres of London's Hyde Park.

Located on the northern edge of Hyde Park, London's largest and most famous Royal Park, Connaught Place is situated in a highly sought-after location, close to the extensive shopping and exclusive restaurants provided by Oxford Street and Connaught Village. Mayfair, Knightsbridge and Notting Hill are all close by. Local transport links include Paddington mainline (Heathrow Express, Network Rail) with Marble Arch as the nearest underground station giving fast journey times into the City and Canary Wharf.

### Features

Stunning Views of Hyde Park  
One Bedroom  
One Bathroom  
890 Sq.Ft  
Lift  
Air Conditioning



## Connaught Place, W2

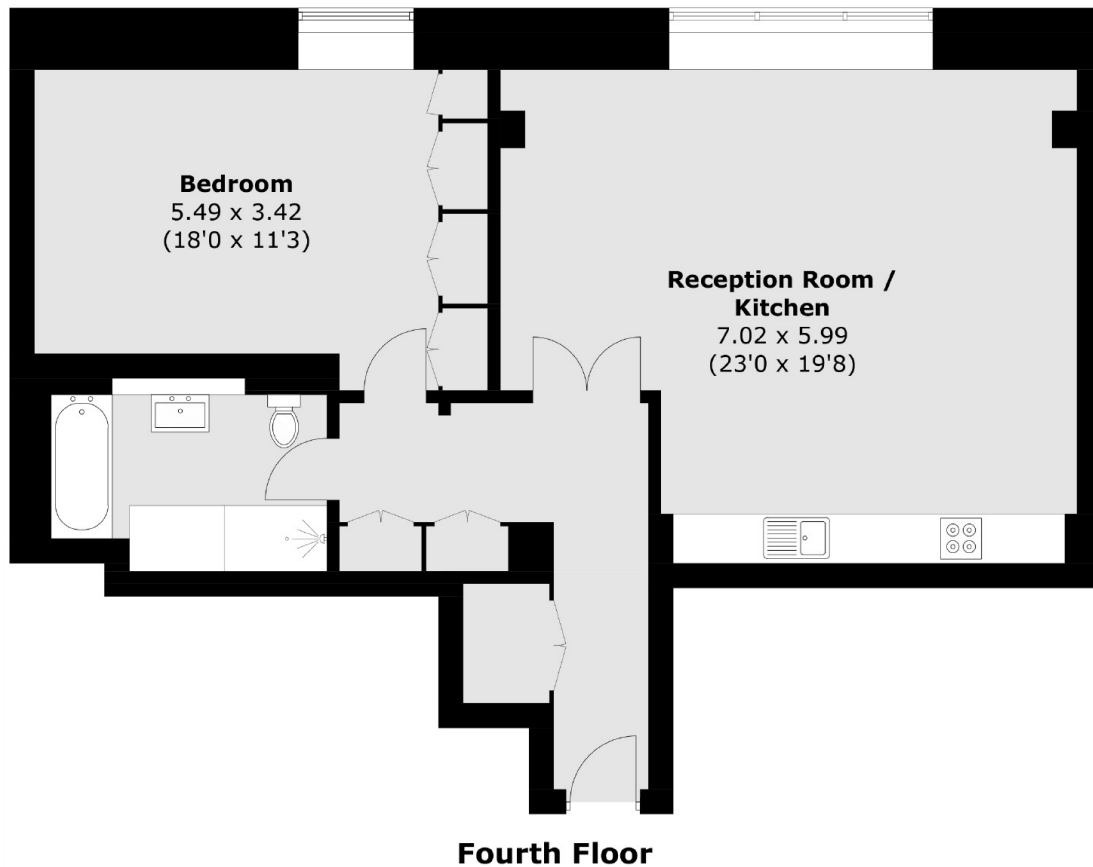
This apartment of 890 sq. Ft is situated on the fourth floor of a Grade II listed purpose-built block on a quiet street opposite adjacent to Hyde Park. There is an impressive entrance hall with high ceilings and a lift access to all floors. Upon entry you're drawn through the spacious, 23-foot-wide reception room to the large window and stunning views of Central London's largest Royal Park.

The reception room incorporates both the living and dining space and an open plan, fully integrated kitchen neatly runs across the back wall. The bedroom shares the south facing views and has built in wardrobes. There is a large bathroom with underfloor heating, bath and walk in shower. The apartment has additional built in storage and air conditioning.





# Connaught Place, London, W2



Area (approx.): 82.7 sq. m (890.2 sq. ft)