



Porchester Square, W2

£1,300,000

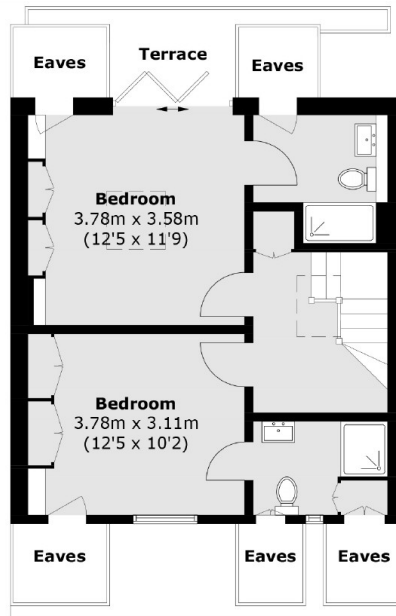
A stylish three bedroom, three bathroom (two en suite) apartment split across two floors in a white stucco fronted Victorian conversion overlooking communal gardens. The property has a spacious reception room with a dining area, separate modern kitchen, built in wardrobes in all bedrooms, with the principal bedroom having en suite and direct access to the terrace.

Porchester Square is ideally located near a large Waitrose supermarket and the shops of Westbourne Grove and Queensway. The closest transport links are Royal Oak and Bayswater whilst Paddington Station is also nearby.

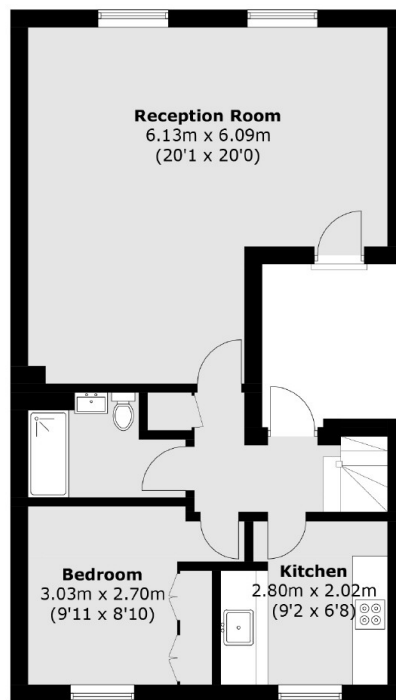
Features

- Communal Gardens
- Balcony
- Spacious Reception
- High Ceilings
- Three Bedrooms
- Three Bathrooms

Porchester Square, London, W2



Fourth Floor



Third Floor

Total area (approx.): 103.6 sq. m (1,115.1 sq. ft)
(Excluding Eaves)
Terrace area : 4.3 sq. m (46.3 sq. ft)