



## Westbourne Park Road, W11

£950,000

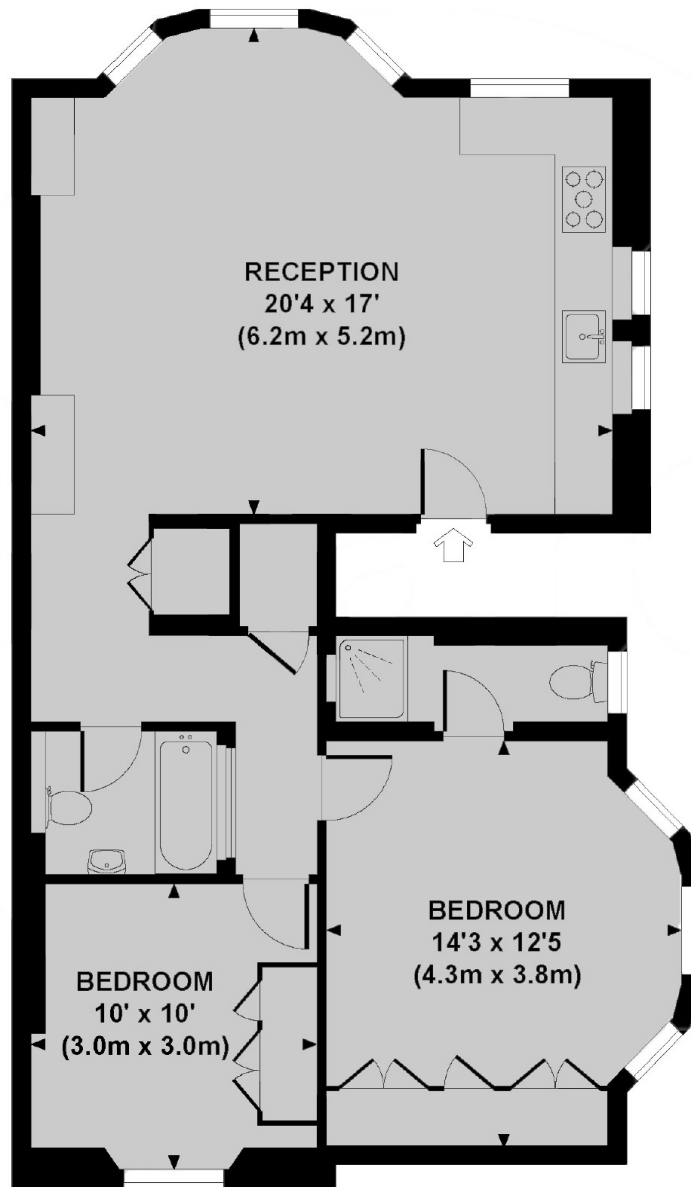
A raised ground floor apartment in a Victorian conversion with high ceilings, giving an elevated sense of space throughout. With two bedrooms and two bathrooms (one en suite) and an open plan kitchen and reception room, this is an ideal home for anyone that loves entertaining.

Westbourne Park Road is situated within easy reach of the popular shops and cafés of Westbourne Grove with further amenities, bars and restaurants on Portobello Road and Notting Hill and for travel links, the closest underground station is Westbourne Park (Hammersmith & City Line).

### Features

- Two Bedrooms
- Two Bathrooms
- South Facing Reception Room
- Stripped Wooden Floors
- High Ceilings
- Westbourne Park Underground

# Westbourne Park Road, London, W11



**RAISED GROUND FLOOR**

Approx. gross internal area  
768 Sq Ft. / 71 Sq M.