



Kensington Gardens Square, W2 £1,500,000

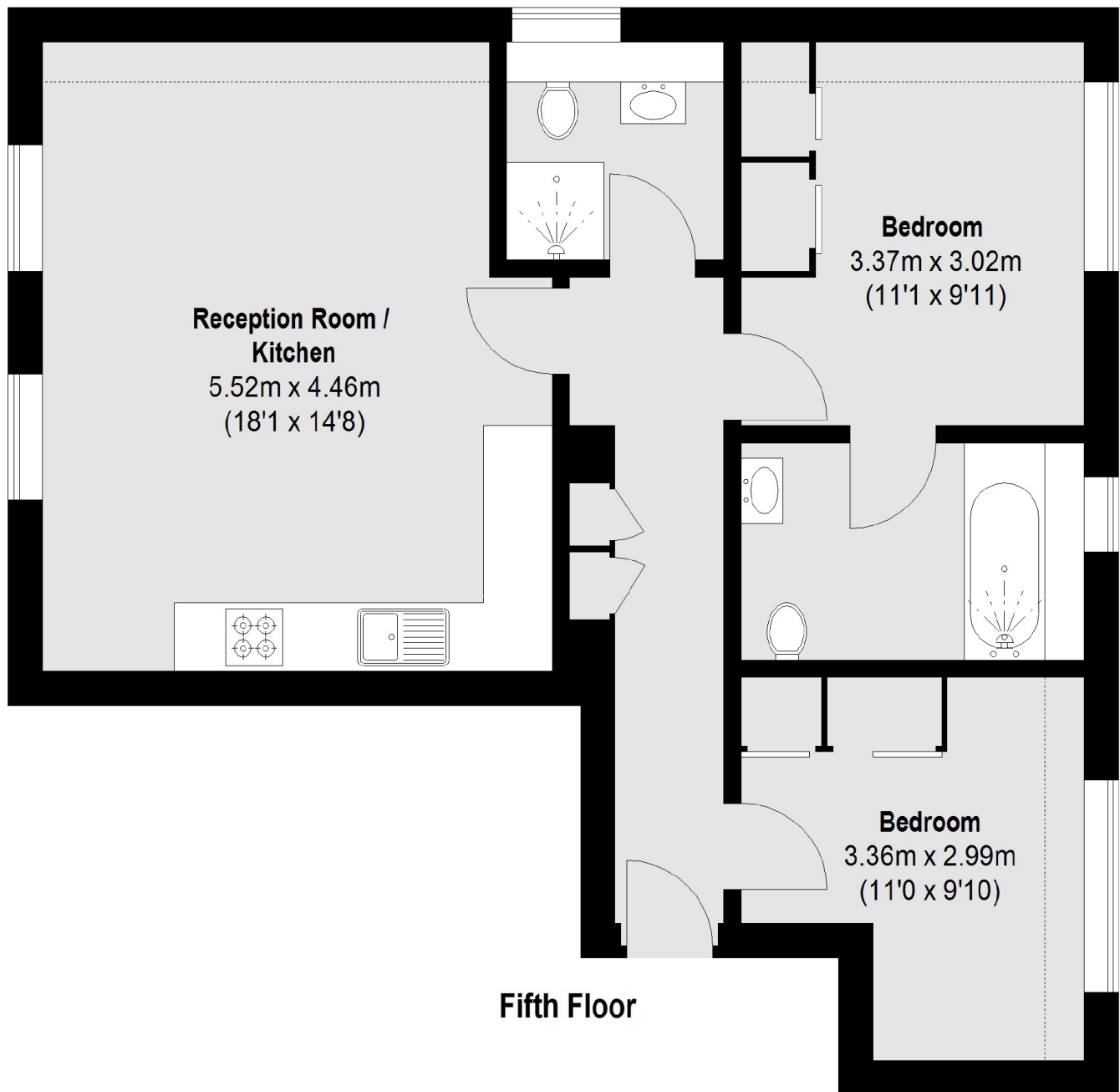
An interior designed and high specification, two double bedroom apartment on the top floor (with lifts) of a much sought after Grade II listed development with 24 hour concierge and private residents gardens. The apartment has far reaching views and wooden floors throughout.

Garden House, Kensington Gardens Square is a prime location near Hyde Park and within easy walking distance of the chic restaurants and shops in Notting Hill and the transport hub in Paddington.

Features

High Specification
Lift
24 Hour Concierge
Interior Designed
High Specification
Private Residents Garden

Kensington Gardens Square, London, W2



Total area (approx.): 61.46 sq. m (662 Sq. ft)