



Southwick Street, W2 £1,500,000

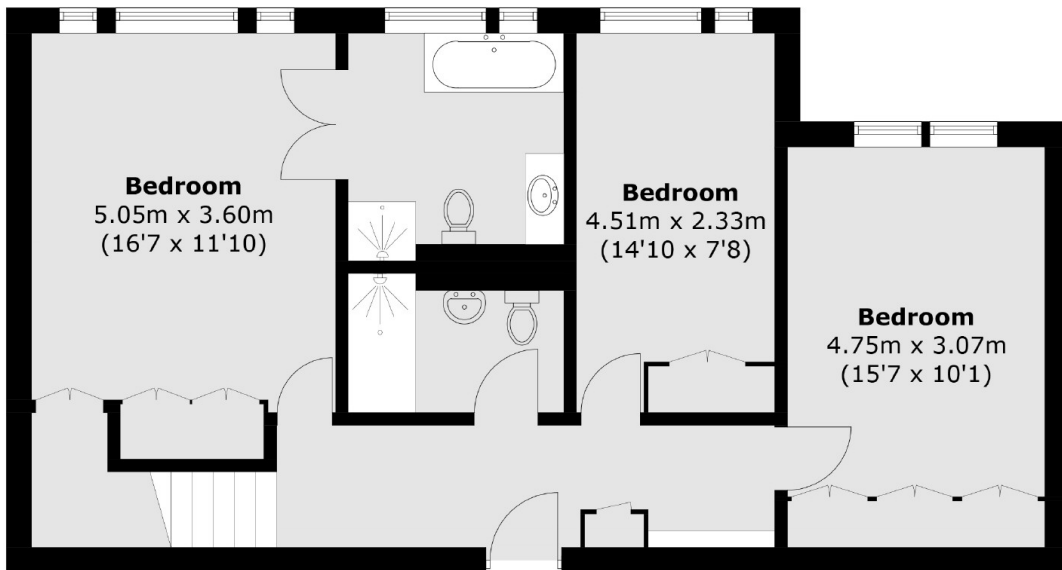
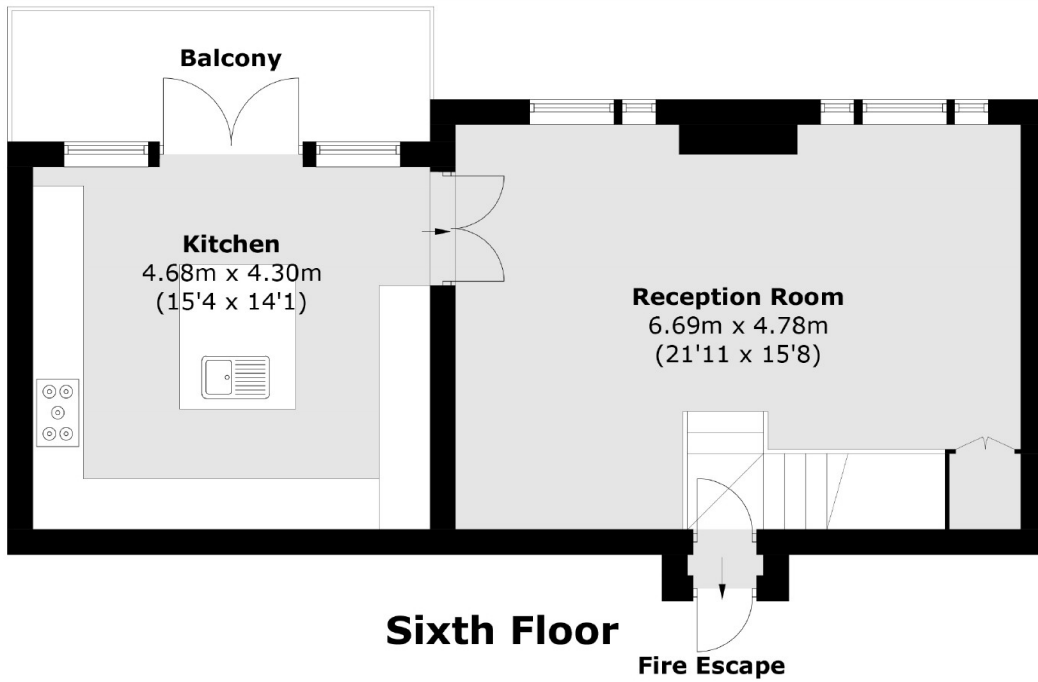
A split level penthouse arranged over the top floors of a portered building in a prime location. Upstairs is the entertaining space, with a separate reception room and large kitchen leading to the balcony. Downstairs is the principal bedroom with en suite and two further bedrooms and a bathroom.

The Hyde Park Estate is conveniently located for Paddington Station, with easy access across and out of London, as well as Hyde Park and plenty of boutique shops, restaurants and pubs.

Features

- Three Bedrooms
- Two Bathrooms
- Split Level
- Penthouse
- Balcony
- Porter

Southwick Street,
London, W2



Fifth Floor

Total area (approx.): 123.5 sq. m (1,329.3 sq. ft)
Balcony: 7.7 sq. m (82.8 sq. ft)