



## Westbourne Terrace, W2

£375,000

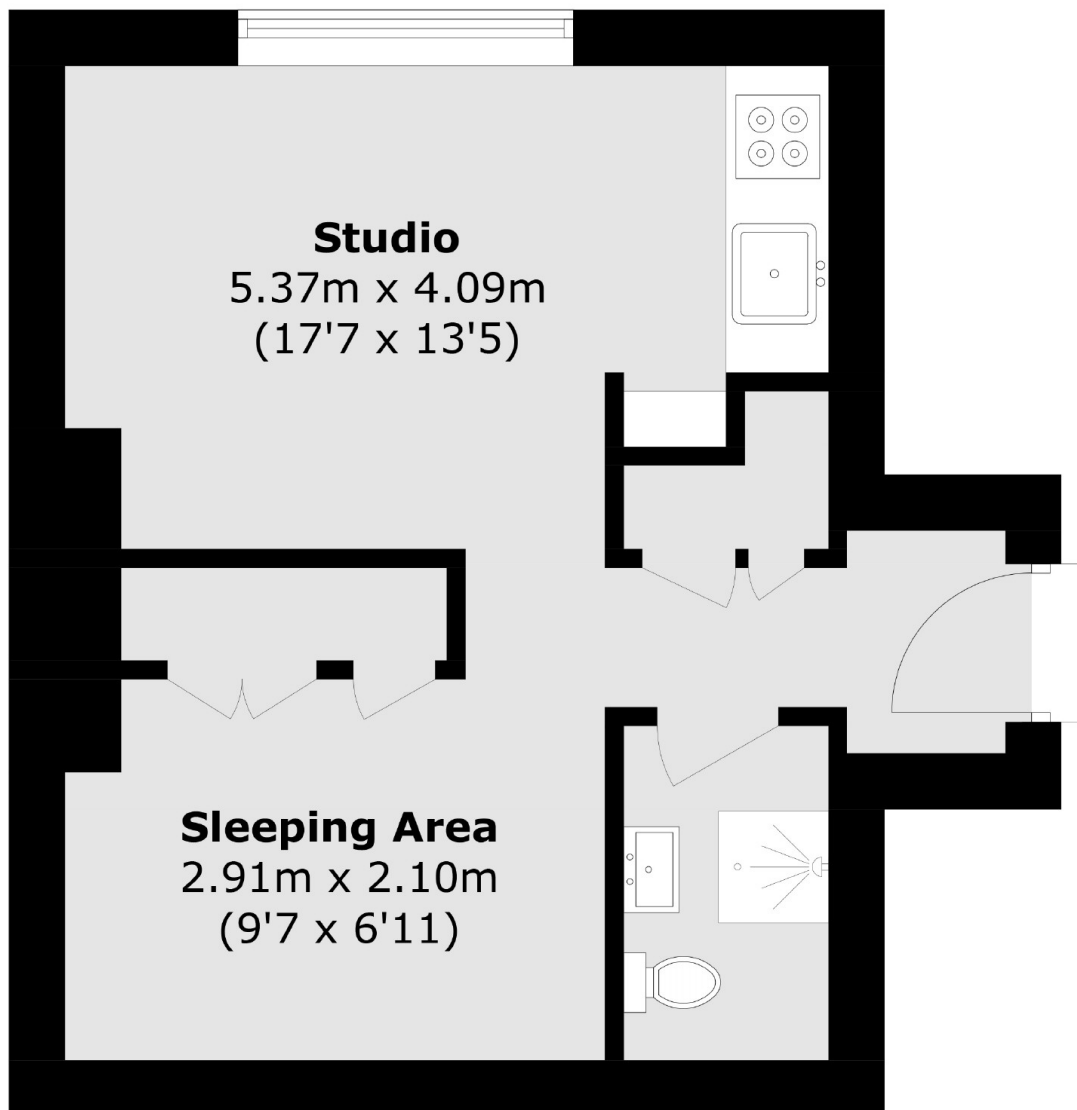
A modern studio apartment with a separate sleeping area in a Victorian period conversion. The property has high ceilings, wooden flooring throughout, an open plan kitchen with room to dine, and ample storage.

Westbourne Terrace is within easy walking distance of Paddington Station, and the Heathrow Express. The green spaces of Hyde Park are a short walk away.

### Features

- Studio
- Separate Sleeping Area
- High Ceilings
- Wooden Flooring
- Hyde Park
- Room To Dine

Westbourne Terrace,  
London, W2



Total area (approx.): 23.1 sq. m (248.6 sq. ft)

**Dexters**

Westbourne Grove  
120 Westbourne Grove  
London  
W11 2RR  
Sales  
020 7313 3600

Energy Rating: E. We aim to make our particulars both accurate and reliable. However they are not guaranteed; nor do they form part of an offer or contract. If you require clarification on any points then please contact us, especially if you're traveling some distance to view. Please note that appliances and heating systems have not been tested and therefore no warranties can be given as to their good working order.

 **RICS** | Regulated  
Estate Agent  
and Letting Agent

[dexters.co.uk](http://dexters.co.uk)