



West Row, W10

£745,000

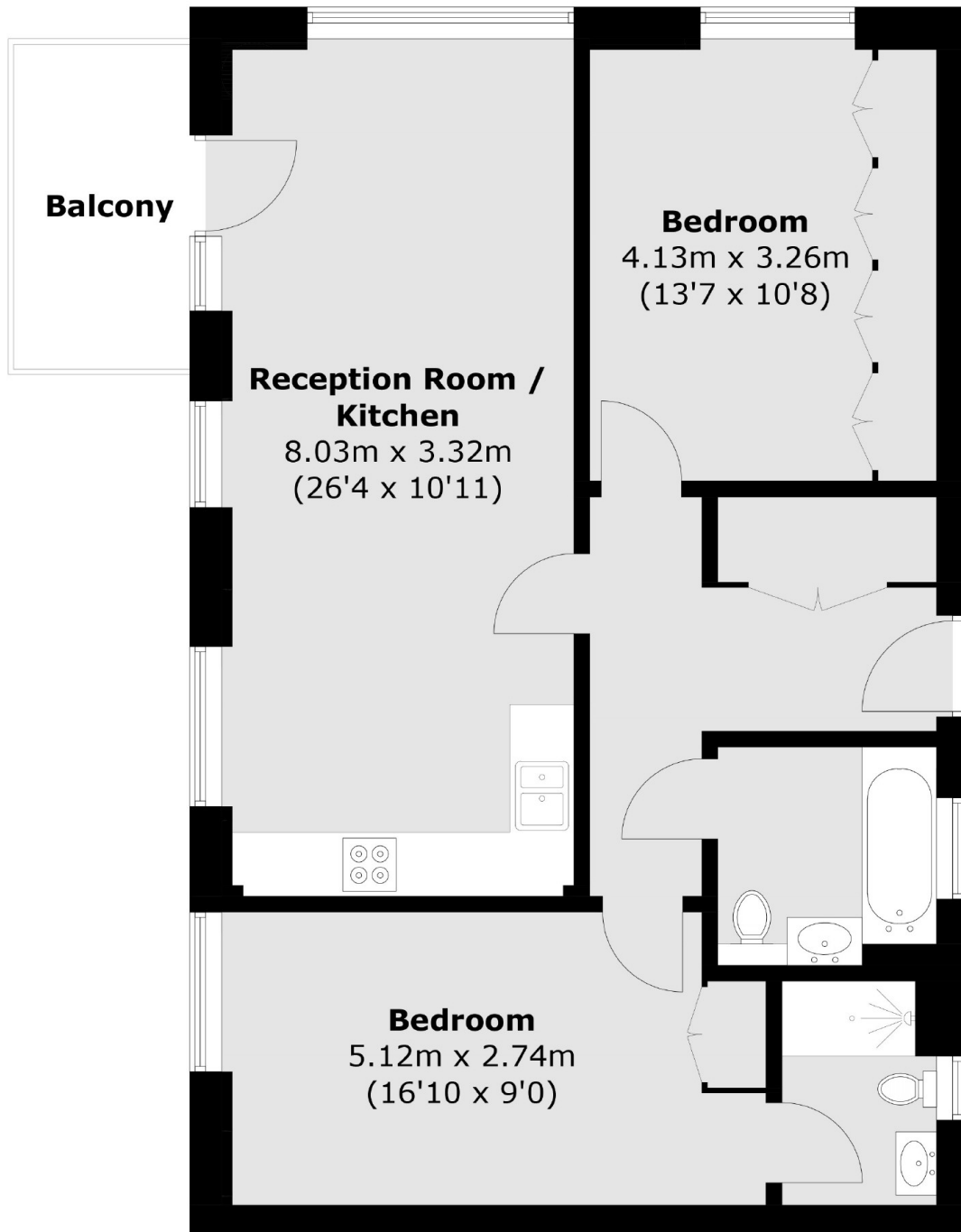
A two double bedroom, two bathroom (one en suite) apartment with gated and allocated off street parking and a balcony, on the third floor (with lift) of a modern apartment building. With an open plan, double aspect kitchen and reception room, immaculately presented and with wooden floors throughout.

Atrium Apartments is on West Row at the north end of Ladbroke Grove, close to the shops, restaurants and cafés on Portobello Road and with convenient transport links close by.

Features

- Two Double Bedrooms
- Two Bathrooms
- Open Plan
- Gated Allocated Parking
- Balcony
- Lift

West Row,
London, W10



Total area (approx.): 73.6 sq. m (792.2 sq. ft)
Balcony: 5.0 sq. m (53.8 sq. ft)