



Hertford Close, Eastfield, Scarborough, YO11 3HJ

- Three bedrooms
- Living room
- Rear garden
- Close to local amenities
- One bathroom
- Functional kitchen
- Located in Eastfield
- Easy access to transport

£100,000



Hertford Close, Eastfield, Scarborough, YO11 3HJ

DESCRIPTION

Hunters are pleased to present this terraced house offering a comfortable and practical living space, ideal for families or first-time buyers. The home features a well-equipped kitchen and a convenient utility room, perfect for everyday living. A bright living room provides a relaxed space for entertaining or unwinding.

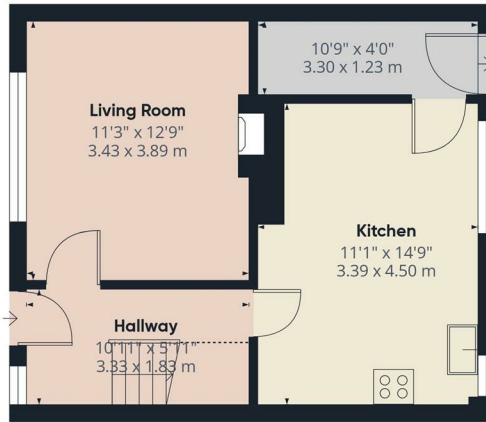
Upstairs, there are three generously sized bedrooms and a bathroom, catering to the needs of a growing family. Outside, the property boasts both front and rear gardens, providing outdoor space for relaxation, play, or gardening.

Situated in a friendly neighbourhood, this home benefits from local amenities, schools, and parks, all within easy reach. The vibrant town of Scarborough, with its stunning coastline and rich history, is just a short distance away, offering a variety of leisure activities and attractions.

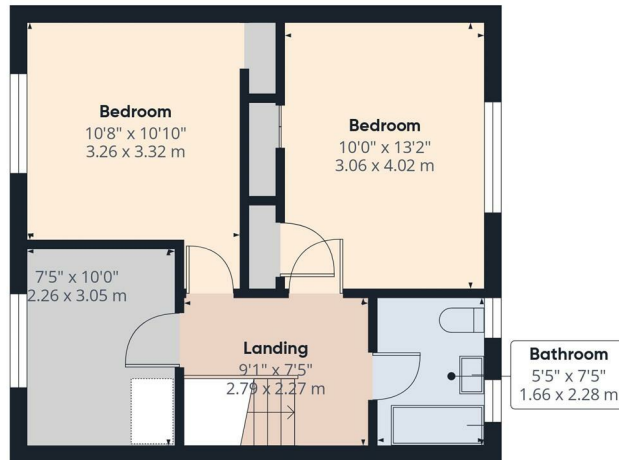
This house on Hertford Close presents an excellent opportunity for those looking to settle in a welcoming community while enjoying the comforts of a well-appointed home. With its appealing features and prime location, it is certainly worth considering for your next move.







Ground Floor



Floor 1

Viewings

Please contact scarborough@hunters.com, if you wish to arrange a viewing appointment for this property or require further information.

Valuations

For a valuation of your property, please email the team with your property details, contact information and the times you are available.

HUNTERS®
HERE TO GET *you* THERE

Approximate total area⁽¹⁾

851 ft²
79.1 m²

Reduced headroom

16 ft²
1.5 m²

(1) Excluding balconies and terraces

Reduced headroom

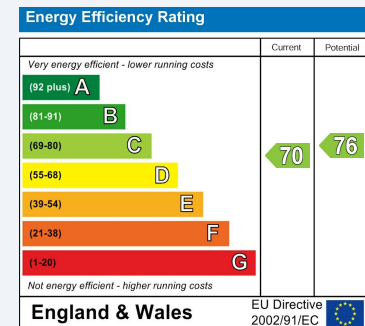
..... Below 5 ft/1.5 m

Calculations reference the RICS IPMS 3C standard. Measurements are approximate and not to scale. This floor plan is intended for illustration only.

GIRAFFE360

ENERGY PERFORMANCE CERTIFICATE

The energy efficiency rating is a measure of the overall efficacy of a home. The higher the rating the more energy efficient the home is and the lower the fuel bills will be.



These particulars are intended to give a fair and reliable description of the property but no responsibility for any inaccuracy or error can be accepted and do not constitute an offer or contract. We have not tested any services or appliances (including central heating if fitted) referred to in these particulars and the purchasers are advised to satisfy themselves as to the working order and condition. If a property is unoccupied at any time there may be reconnection charges for any switched off/disconnected or drained services or appliances - All measurements are approximate.

THINKING OF SELLING? If you are thinking of selling your home or just curious to discover the value of your property, Hunters would be pleased to provide free, no obligation sales and marketing advice. Even if your home is outside the area covered by our local offices we can arrange a Market Appraisal through our national network of Hunters estate agents.