



HUNTERS[®]
HERE TO GET *you* THERE



HUNTERS

Seamer Road, East Ayton, Scarborough

Offers In Excess Of £195,000



Hunters are thrilled to bring to the market this beautifully presented semi-detached home, occupying an enviable corner plot with stunning open field views to the front. Finished to a good standard throughout, this attractive property is perfect for first-time buyers, young families, or those looking to downsize without compromise.

Step inside to discover a bright and spacious living room, a modern, well-equipped kitchen, and two generously proportioned bedrooms. A contemporary bathroom serves the home, adding to its stylish and move-in-ready feel.

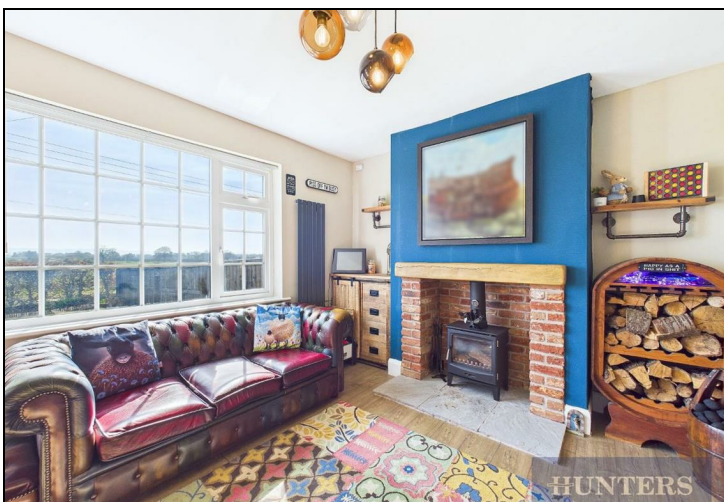
Outside, the impressive front and side gardens provide fantastic space for outdoor entertaining, family gatherings, or simply relaxing and enjoying the open views. Off-road parking to the side adds everyday convenience, making this charming home a must-see.

East Ayton is a charming village nestled in North Yorkshire, England, just a few miles southwest of the coastal town of Scarborough. Known for its picturesque setting along the banks of the River Derwent, the village blends historical character with natural beauty. At its heart lies a traditional English community, complete with quaint stone cottages, a welcoming pub, and a parish church dating back centuries. East Ayton is also a gateway to the North York Moors National Park, making it a popular spot for walkers, cyclists, and nature enthusiasts. With its peaceful atmosphere and rich local history, it offers a tranquil escape while still being close to the amenities of larger towns nearby.

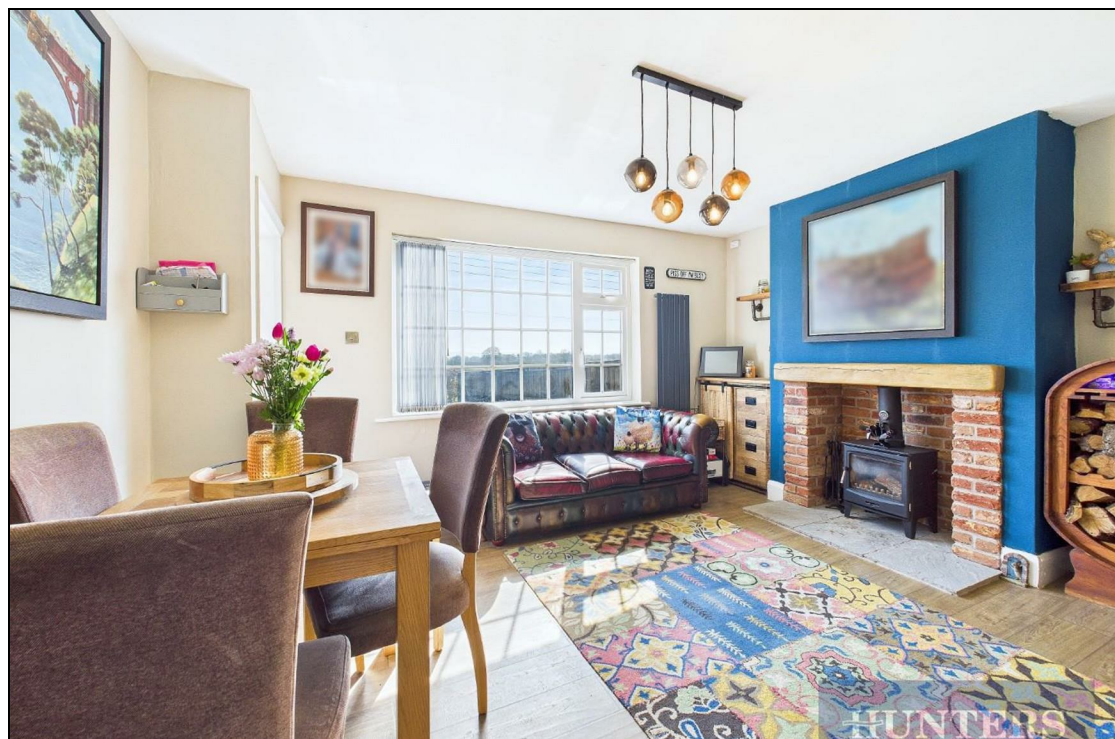
Situated in a desirable location with countryside outlooks and easy access to local amenities and transport links, this property offers the perfect blend of rural charm and everyday practicality.

KEY FEATURES

- Semi Detached Home
 - Modern Kitchen
- Two Double Bedrooms
 - Family Bathroom
- Open Field Views
- Private Driveway









HUNTERS
HERE TO GET *you* THERE

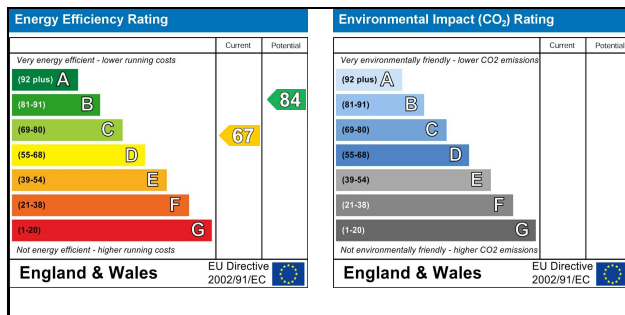
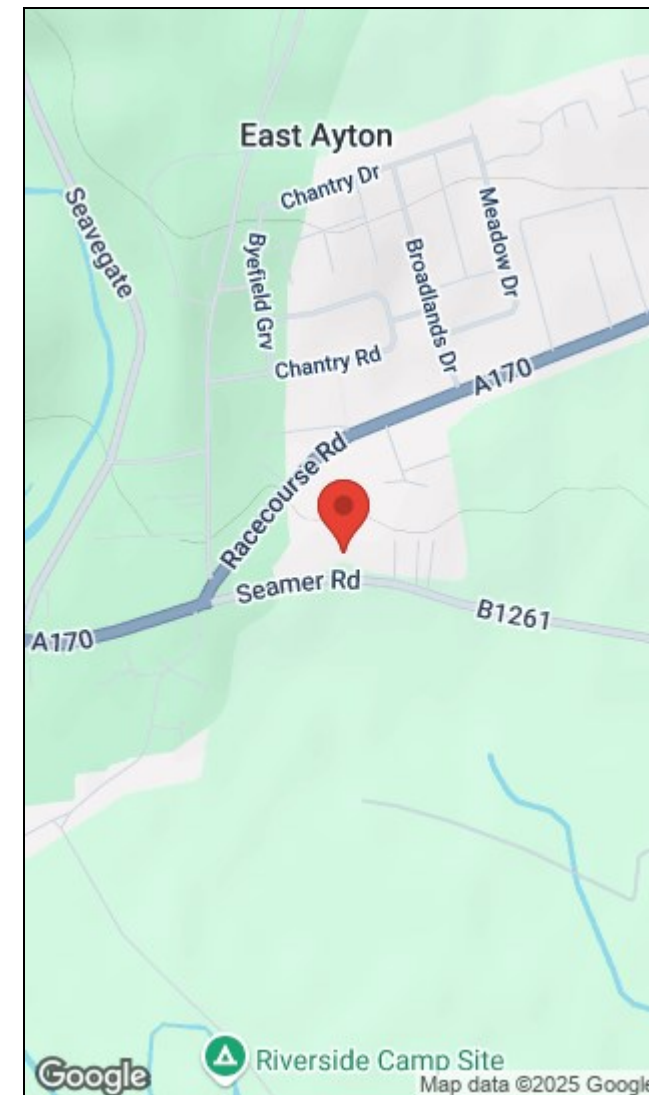
Approximate total area⁽¹⁾
690 ft²
64.3 m²

(1) Excluding balconies and terraces

While every attempt has been made to ensure accuracy, all measurements are approximate, not to scale. This floor plan is for illustrative purposes only.

Calculations are based on RICS IPMS 3C standard.

GIRAFFE360



33 Huntriss Row, Scarborough, YO11 2ED | 01723 336760
scarborough@hunters.com | www.hunters.com



This Hunters business is independently owned and operated by Coast and Country Scarborough Ltd | Registered Address: C/O Dutton Moore Aldgate House 1-4 Market Place Hull HU1 1RS | Registered Number: 5974243 England and Wales | VAT No: 894 7004 00 with the written consent of Hunters Franchising Limited.