



## Steading Road, Eastfield, Scarborough, YO11 3FR

- Mid Terrace Home
- Living Room with French Doors
- Downstairs WC and Shower Room
- Kitchen with Dining Space
- Two Double Bedrooms
- Three Parking Spaces

**Offers In The Region Of £155,000**



# Steading Road, Eastfield, Scarborough, YO11 3FR

## DESCRIPTION

Hunters are pleased to offer this well-presented mid-terrace home, ideal for first-time buyers, small families, or those looking to downsize. The property boasts a spacious kitchen with ample room for dining, and a bright living room featuring French doors that open directly onto the rear garden—perfect for seamless indoor-outdoor living.

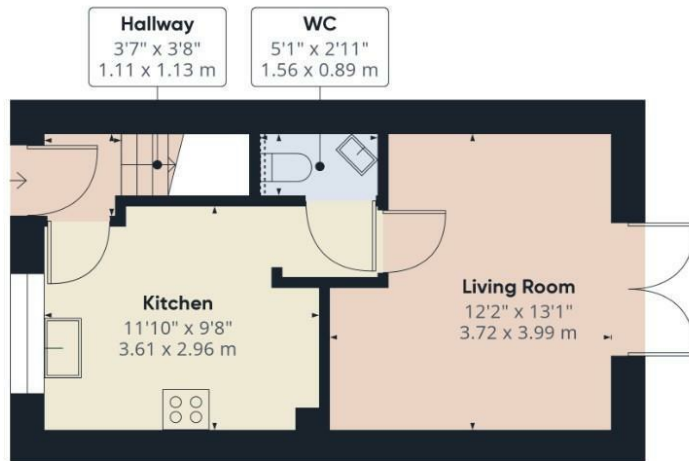
Downstairs also benefits from a convenient WC. Upstairs, the home offers two generously sized double bedrooms and a modern family bathroom.

Externally, the private rear garden includes a paved area, ideal for outdoor seating or entertaining. One of the standout features is the three parking spaces which come with the property, offering exceptional convenience.

Situated in a highly desirable and vibrant residential area, this impressive property offers a rare combination of comfort, generous living space, and everyday practicality. Surrounded by a wealth of local amenities including shops, cafes, schools, parks, and healthcare services, it caters perfectly to the needs of modern living. Excellent transport links provide quick and easy access to the town center and surrounding areas, making it ideal for commuters and families alike.







Ground Floor



Floor 1

### Viewings

Please contact [scarborough@hunters.com](mailto:scarborough@hunters.com), if you wish to arrange a viewing appointment for this property or require further information.

### Valuations

For a valuation of your property, please email the team with your property details, contact information and the times you are available.

**HUNTERS**  
HERE TO GET *you* THERE

#### Approximate total area<sup>(1)</sup>

590.51 ft<sup>2</sup>

54.86 m<sup>2</sup>

#### Reduced headroom

0.41 ft<sup>2</sup>

0.04 m<sup>2</sup>

(1) Excluding balconies and terraces

#### Reduced headroom

..... Below 5 ft/1.5 m

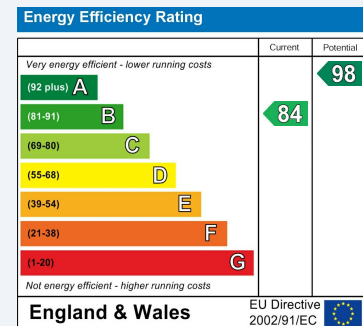
While every attempt has been made to ensure accuracy, all measurements are approximate, not to scale. This floor plan is for illustrative purposes only.

Calculations are based on RICS IPMS 3C standard.

GIRAFFE 360

## ENERGY PERFORMANCE CERTIFICATE

The energy efficiency rating is a measure of the overall efficacy of a home. The higher the rating the more energy efficient the home is and the lower the fuel bills will be.



These particulars are intended to give a fair and reliable description of the property but no responsibility for any inaccuracy or error can be accepted and do not constitute an offer or contract. We have not tested any services or appliances (including central heating if fitted) referred to in these particulars and the purchasers are advised to satisfy themselves as to the working order and condition. If a property is unoccupied at any time there may be reconnection charges for any switched off/disconnected or drained services or appliances - All measurements are approximate.

**THINKING OF SELLING?** If you are thinking of selling your home or just curious to discover the value of your property, Hunters would be pleased to provide free, no obligation sales and marketing advice. Even if your home is outside the area covered by our local offices we can arrange a Market Appraisal through our national network of Hunters estate agents.