



HOME + CASTLE
ESTATE AGENTS

Home and Castle Estate Agents
4 Millfields, Station Rd, Polegate BN26 6AS
Tel: 01323 481922
Email: info@hcsussex.co.uk
hcsussex.co.uk



Ashford Road, Eastbourne, BN21 3TB

| Flat | 2 Bedrooms

Home & Castle are delighted to bring to the market this split level 2 bedroom flat set in the heart of the Town Centre. Minutes from the high street and easy access to The Beacon, this property offers a large reception room, a good size kitchen, 1 double & 1 single bedroom and a white suite bathroom. Also within minutes to the mainline Train Station. Water Rates Included

Internal viewing highly recommended!

TO LET
£1,175 PCM

Entrance

Communal entrance to private front door.

Hallway

Through the door to the hallway with stairs leading up to the first floor, carpeted flooring

Reception Room 16'3" x 12'4" (4.95m x 3.76m)



With carpeted flooring, double glazed front aspect windows x 2, radiator

Bedroom 1 10'6" x 9'9" (3.20m x 2.97m)



With carpeted flooring, radiator, double glazed rear aspect window

Bedroom 2 9'1" x 10'1" (2.77m x 3.07m)



With carpeted flooring, radiator, double glazed rear aspect window

Stairs to Second Floor

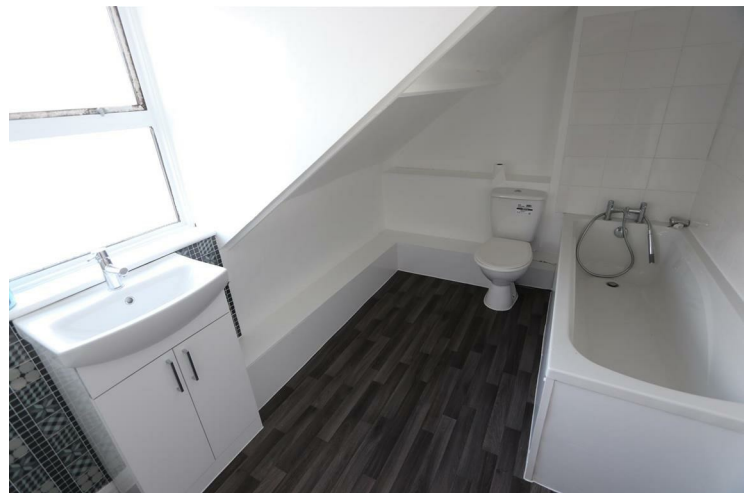
Carpeted stairs

Kitchen 16'2" x 11'5" (4.93m x 3.48m)



With a range of wall and base units, double glazed front aspect window, vinyl flooring, radiator
Oven & hob.

Bathroom 10'3" x 7'9" (3.12m x 2.36m)



With a white suite of wash hand basin, bath with hair

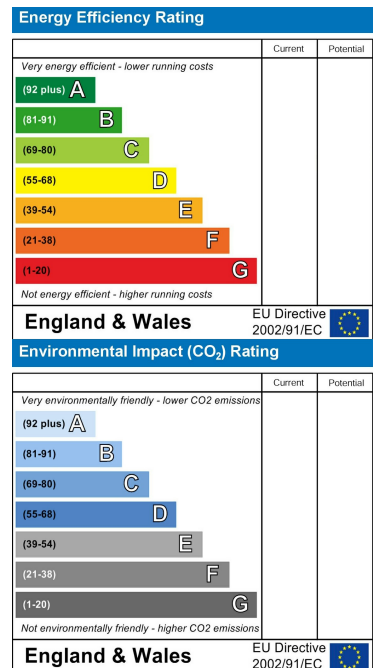
attachment shower, w.c. Vinyl flooring, radiator, double glazed rear aspect window with obscured glass

Floor Plan

Area Map



Energy Efficiency Graph



These particulars, whilst believed to be accurate are set out as a general outline only for guidance and do not constitute any part of an offer or contract. Intending purchasers should not rely on them as statements of representation of fact, but must satisfy themselves by inspection or otherwise as to their accuracy. No person in this firm's employment has the authority to make or give any representation or warranty in respect of the property.