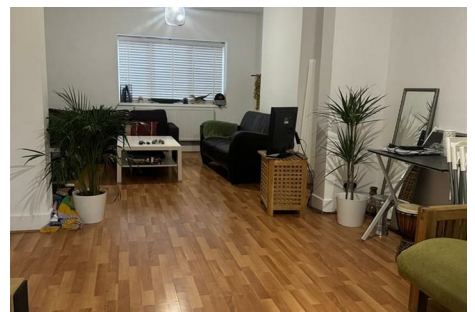
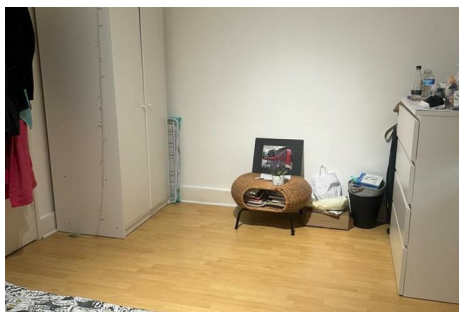
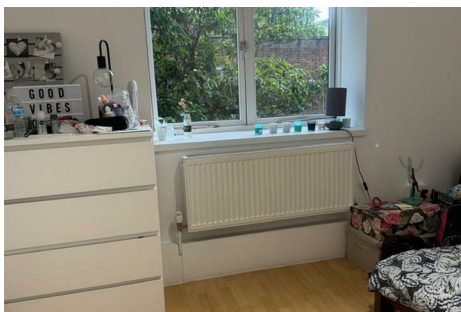


Wild & Co.

wildandco.uk



Rotherfield Street, N1 3RD

LARGE DOUBLE BEDROOM within this flat share (with live in landlord). 3 sharers in total (existing sharers 1 woman and 1 man). 3 bed maisonette flat arranged over ground and first floors. Offered part furnished, with large shared lounge, bathroom/WC, g/f WC, kitchen/diner and rear garden. Sought after location, walking distance of Angel and Highbury & Islington tube stations, great bus links and accessible of Old St tube station. ALL BILLS INCLUDED. AVAILABLE FROM 1/08/2024

£950 PCM |

Rotherfield Street, N1 3RD



- Large double bedroom - within professional flat share
- Offered part furnished
- Great bus links and access to Old St tube station
- 3 Sharers in total
- Shared living room and rear garden
- ALL BILLS INCLUDED
- 3 Bed split level d maisonette flat
- Walking distance of Angel and Highbury & Islington tube stations
- AVAILABLE FROM 01/08/2024

Paragraph

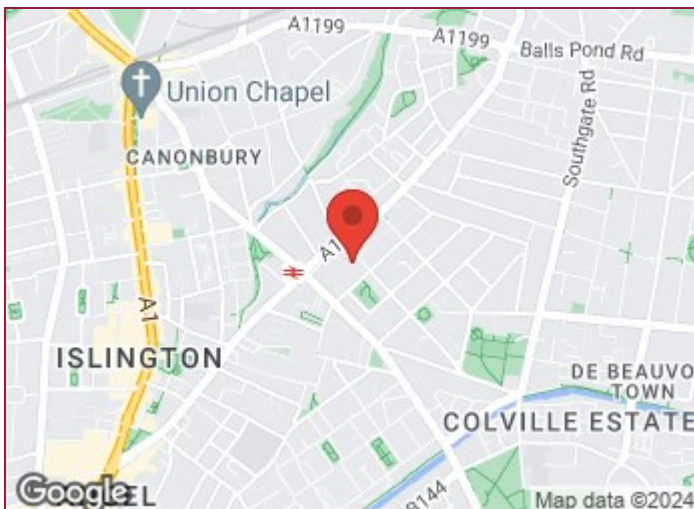
LARGE DOUBLE BEDROOM within this flat share (with live in landlord). 3 sharers in total (existing sharers 1 woman and 1 man).

3 bed maisonette flat arranged over ground and first floors.

Offered part furnished, with large shared lounge, bathroom/WC, g/f WC, kitchen/diner and rear garden.

Sought after location, walking distance of Angel and Highbury & Islington tube stations, great bus links and access to Old St tube station.


ALL BILLS INCLUDED.
AVAILABLE FROM 1/08/2024




Directions

Corner of Ecclesbourne Rd and Rotherfield St.



Energy Efficiency Rating		Current	Potential
Very energy efficient - lower running costs			
(92 plus) A			
(81-91) B			
(69-80) C			
(55-68) D			
(39-54) E			
(21-38) F			
(1-20) G			
Not energy efficient - higher running costs			
England & Wales	EU Directive 2002/91/EC		

Environmental Impact (CO ₂) Rating		Current	Potential
Very environmentally friendly - lower CO ₂ emissions			
(92 plus) A			
(81-91) B			
(69-80) C			
(55-68) D			
(39-54) E			
(21-38) F			
(1-20) G			
Not environmentally friendly - higher CO ₂ emissions			
England & Wales	EU Directive 2002/91/EC		

These particulars, whilst believed to be accurate are set out as a general outline only for guidance and do not constitute any part of an offer or contract. Intending purchasers should not rely on them as statements of representation of fact, but must satisfy themselves by inspection or otherwise as to their accuracy. No person in this firm's employment has the authority to make or give any representation or warranty in respect of the property.