



Greenwell Row, Clayton,

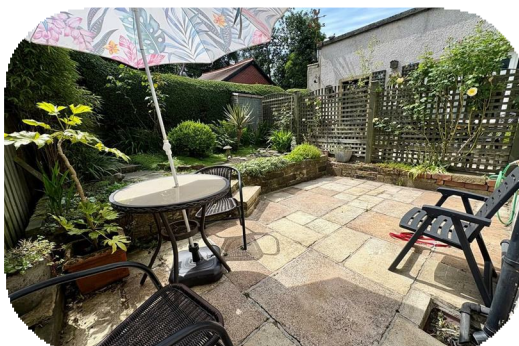
£189,950

This stunningly presented two double bedroom extended terrace property offers ready to move into accommodation.

Situated in the heart of Clayton Village and within walking distance of amenities, shops, schools and the local park.

The property offers a twix of old and new and would make an excellent purchase for anybody downsizing or a FTB.

To the outside there are well stocked gardens to the rear with a low maintenance paved area to the front.



Entrance Vestibule

Open Plan Lounge Kitchen

25'3 x 13'1 (7.70m x 3.99m)
Gas fire with feature surround fireplace, central heating radiator and double glazed window.

Kitchen Area

Modern fitted wall and base units, Stainless Steel sink unit and tiled splash backs and flooring. Double oven, electric hob with extractor fan over. Plumbing for washing machine and dishwasher. Door leading out to garden area, double glazed window and central heating radiator.

Cellar

Useful storage space.

First Floor Landing

Original floorboards, central heating radiator, useful storage cupboard.

Bedroom One

10'7 x 13'9 (3.23m x 4.19m)
Original floorboards, central heating radiator, double glazed window.

Bedroom Two

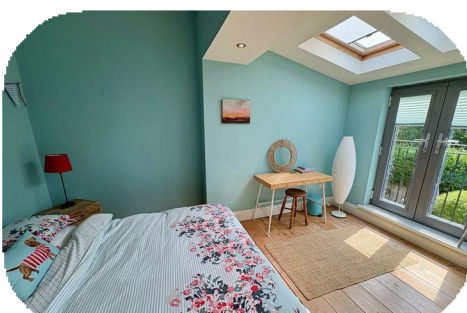
10'3 x 13'7 (3.12m x 4.14m)
Original floorboards, central heating radiator, double glazed velux window and Juliette balcony.

Bathroom

Modern three piece suite comprising of; low flush WC, wash hand basin and p shaped bath with shower over. Tiled wall and floor, heated towel rail and double glazed window.

External

Well maintained enclosed gardens to the rear and patio garden to the front.



Agent Notes & Disclaimer We endeavour to make our particulars fair, accurate and reliable. The information provided does not constitute or form part of an offer or contract, nor may it be regarded as representation. All interested parties must verify accuracy and your solicitor must verify tenure/lease information, fixtures & fittings and, where the property has been extended/converted, planning/building regulation consents. All dimensions are approximate and for guidance only, as are floorplans which are not to scale, and their accuracy cannot be confirmed. Reference to appliances and/or services does not imply that they are necessarily in working order or fit for purpose. We strongly advise prospective buyers to commission their own survey or service reports before finalising their offer to purchase. **Money Laundering Regulations** Intending purchasers will be asked to produce identification and proof of finance. We would ask for your co-operation in order that there will be no delay in agreeing a sale. We are covered and members of The Property Ombudsman.

