



BELVOIR!

Hillside View, Graigwen, Pontypridd

£449,950



BELVOIR!



BELVOIR!



BELVOIR!



4



2



2

Freehold | EPC rating: U

- Detached Property
- Spacious Grounds
- Garden Bar / Summer House

- Double Garage
- Stunning Views
- Decking Area

BELVOIR!

Property is personal

Email
Pontypridd@belvoir.co.uk

Phone
01443 309224

Description

Stunning 4-Bedroom Detached Home with Spectacular Views over Pontypridd

A rare opportunity to acquire a beautifully positioned 4-bedroom detached property with breath taking panoramic views over the town of Pontypridd and the surrounding valley. Set in a peaceful and sought-after location, this spacious family home offers the perfect balance of modern living and natural beauty, with a generous garden space extending to approximately three-quarters of an acre.

Key Features:

Rare Find - A rare opportunity to purchase a detached property of this size in the area, offering peace, privacy, and a connection to nature

4 Bedrooms - Generously sized, light-filled rooms perfect for family living

Stunning Views - Uninterrupted views across Pontypridd and the valley beyond, ideal for relaxing or entertaining

Photographs



Rooms

Hallway

uPVC front door leading to the welcoming hallway with tiled flooring and white painted woodwork.

Living Room

Good size living room running the full length of the property. Beautiful views from the front window and French Doors leading to the side of house patio area.

3.42m x 6.05m (11'2" x 19'10")

Dining Room

Dining room or second reception room with view to the front.

2.89m x 2.85m (9'6" x 9'5")

Kitchen

Good sized kitchen with plenty of storage space provided in the fitted cupboards and drawers. Integral oven and hob with cooker hood. Large window to rear providing good natural light

2.95m x 3.66m (9'8" x 12'0")

Utility Room

Practical space with built in cupboard, wall fixed cupboards, Worktop space and room for washing machine and dryer. External door to rear of property.

1.56m x 1.87m (5'1" x 6'1")

Downstairs WC

Convenient ground floor wc with toilet and hand wash basin

Main Bedroom

Good sized bedroom with views to the rear garden

3.5m x 3.54m (11'6" x 11'7")

en suite

en suite bathroom with toilet, wash basin and shower cubicle.

1.58m x 2m (5'2" x 6'7")

Bedroom 2

Another good sized bedroom with views to the rear.

2.74m x 3.43m (9'0" x 11'4")

Bedroom 3

Front facing bedroom with views over Pontypridd.

3.14m x 2.51m (10'4" x 8'2")

Bedroom 4

Front facing bedroom with views over Pontypridd.

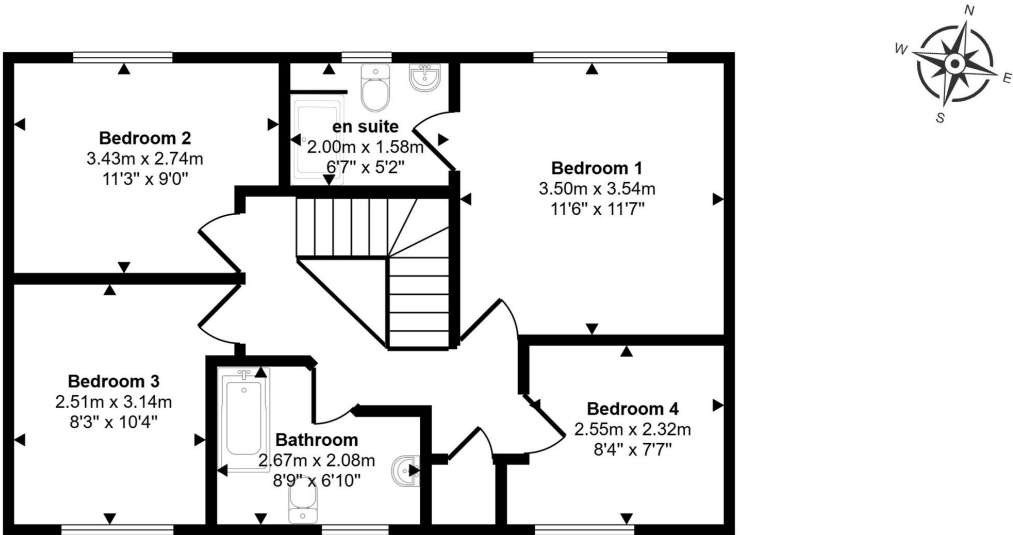
2.32m x 2.55m (7'7" x 8'5")

Bathroom

Bathroom with toilet, bath and recessed hand wash basin with cupboard space below. Wall mounted cupboards

2.08m x 2.67m (6'10" x 8'10")

Floorplan



First Floor
Approx 56 sq m / 600 sq ft

This floorplan is only for illustrative purposes and is not to scale. Measurements of rooms, doors, windows, and any items are approximate and no responsibility is taken for any error, omission or mis-statement. Icons of items such as bathroom suites are representations only and may not look like the real items. Made with Made Snappy 360.

Map

