



West Point
LS1

ZENKO
CITY LIVING

FOR SALE

£224,950

A SPACIOUS APARTMENT WITH TWO DOUBLE BEDROOMS,
UNDERGROUND CAR PARKING AND BALCONY.

















2

Bedrooms

2

Bathrooms

800

Sq. Ft.



ABOUT

A spacious apartment within West Point, a very well-established development in a central location. The property benefits from a spacious open plan living area and balcony accessible from the living area and both bathrooms

West Point is a conversion of a former office building and benefits from a concierge and lift access to all floors as well shops, restaurants, bars, and cafés to the ground floor level. There are further amenities in the immediate area within the Central Square development next door.

LARGER THAN AVERAGE – APPROX. 800 SQUARE FEET

ONSITE AMENITIES

VERY WELL-MAINTAINED THROUGHOUT

MOMENTS FROM THE RAILWAY STATION AND FINANCIAL DISTRICT

GOOD SIZE BALCONY ACCESSIBLE FROM ALL MAIN ROOMS

EPC: B

UNDERGROUND SECURE CAR PARKING

COUNCIL TAX BAND: D

24/7 CONCIERGE

LEASEHOLD





ABOUT.. continued

Lease Length: 999 years from 2005

Service charge: £4084

Ground rent: £365.23

Ground rent review: Every 10 years by RPI. Next review Jan 2027





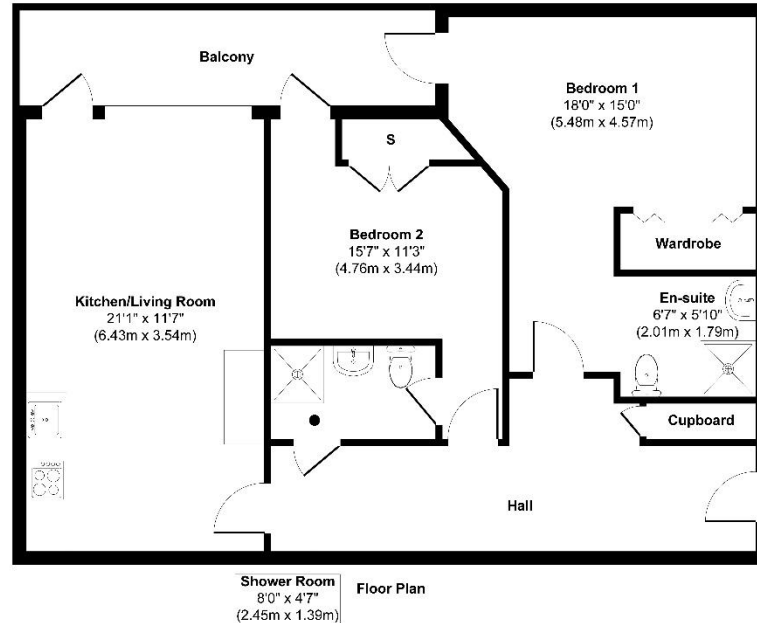






Floorplan

148 West Point, Wellington Street, Leeds, LS1 4JL,



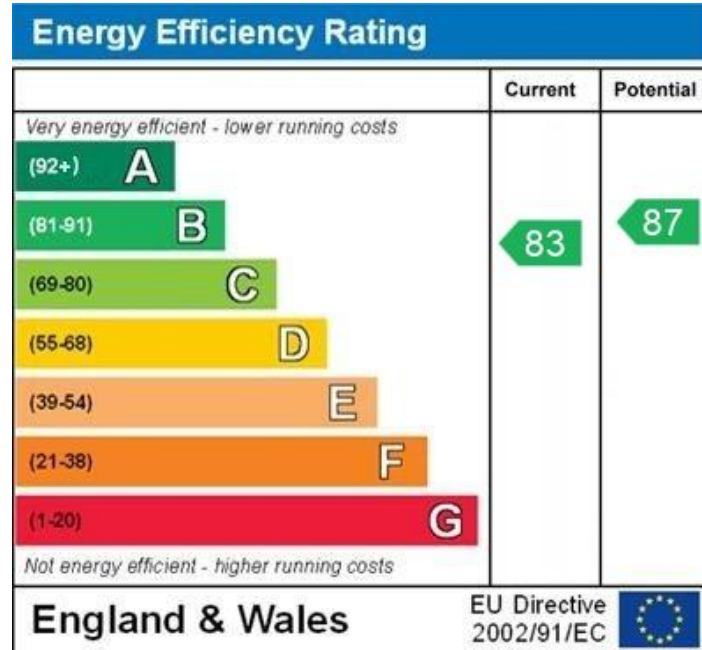
Approx. Gross Internal Floor Area 826 sq. ft / 76.71 sq. m

Illustration for identification purposes only, measurements are approximate, not to scale.

Produced by Elements Property



EPC



WWW.EPC4U.COM

Lease information

999 from
2005

Lease length

£4084
P.A

Service charge

£365
P.A

Ground rent



For more information or to arrange a viewing contact
Ian Darley, Zenko Properties



Zenko Properties, Graphical
House, 2 Wharf Street Leeds,
LS2 7EQ



0113 247 0777



ian@zenkoproperties.co.uk



www.zenkoproperties.co.uk



ZENKO
CITY LIVING