



Gateway West,
LS9

ZENKO
CITY LIVING

FOR SALE

£134,950

A SPACIOUS 5TH FLOOR APARTMENT IN A WELL-ESTABLISHED
BUILDING.

















1

Bedrooms

1

Bathrooms

505

Sq. Ft.



ABOUT

A fifth floor apartment in a very well-established building in a popular location. Many of the city's amenities are within easy walking distance including Leeds General Infirmary (29 mins), the Law Courts (24 mins), the Railway Station (18 mins), Northern Ballet (4 mins), the West Yorkshire Playhouse (5 mins), Leeds Dock (7 mins) and the main shopping areas of Trinity (12 mins), Victoria Gate and Victoria Quarter (11 mins) also being close by.

SPACIOUS ONE BEDROOM

LEASEHOLD

5TH FLOOR

EPC: C

WEST FACING TOWARDS THE CITY

COUNCIL TAX BAND: C

LARGER THAN AVERAGE

ONSITE GYM, MANAGEMENT OFFICE AND
SHOP

NO CLADDING ISSUES



ABOUT.. continued

We are advised of the following leasehold charges:

We are advised that the current service charge £1739 P.A

We are advised that the current ground rent is £250 P.A

Lease length: 150 years from 2006

Gateway is a scheme comprising of four residential buildings totalling 550 apartments built by Scotfield in 2009.

The development sits on the junction of East Street and Crown Point Road offering great access to the city centre and local amenities . A number of apartments have views across the city centre and there is lift access to all floor levels. The development benefits from an onsite concierge, gym, convenience store, intercom entry system and CCTV throughout.

Heating: Electric wall mounted heaters, Metred consumption

Water: Mains connected, via a meter

Broadband: High speed fibre

Mobile signal: No issues to report

Construction type: Purpose built

Flood Risk: None

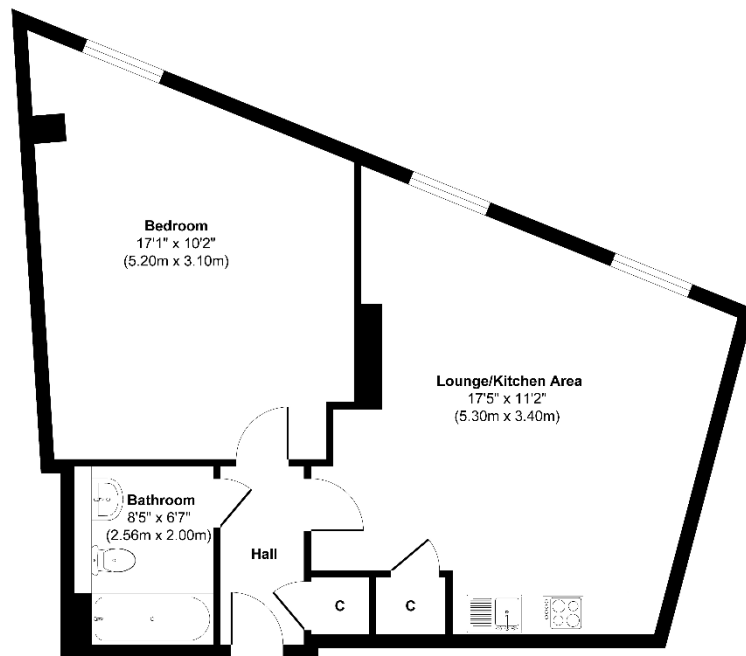
Local Planning Permissions: Flax Place







509 Gateway West, LS9 8DR



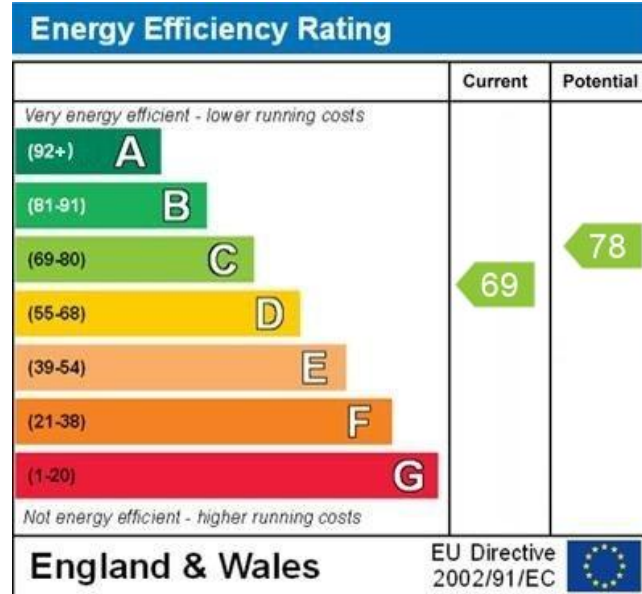
Floor Plan

Approx. Gross Internal Floor Area 505.9 sq. ft / 47 sq. m

Illustration for identification purposes only, measurements are approximate, not to scale.
Produced by Elements Property



EPC



WWW.EPC4U.COM

Lease information

150 from
2006

Lease length

£1739
P.A

Service charge

£250
P.A

Ground rent



For more information or to arrange a viewing contact
Ian Darley, Zenko Properties



Zenko Properties, 2 The
Chandlers, Leeds, LS2 7EZ



0113 247 0777



ian@zenkoproperties.co.uk



www.zenkoproperties.co.uk



ZENKO
CITY LIVING