



Candle House,
Granary Wharf

ZENKO
CITY LIVING

FOR SALE

£179,950

A SPACIOUS ONE BEDROOM APARTMENT WITH BALCONY AND
FAR-REACHING VIEWS











DOUBLETREE BY HILTON





1

Bedrooms

1

Bathrooms

534

Sq. Ft.



ABOUT

A spacious 17th floor one-bedroom apartment in a very well-established building in a central location. Many of the city's amenities are within easy walking distance including the General Infirmary (21 minutes), the Law Courts (17 minutes), the Business District (10 mins) and direct access to the railway station is available from the development. The main shopping areas of Trinity (8 mins) and Victoria Gate (8 mins) are also close by.

The property is positioned on the 17th floor and has a balcony with far-reaching views over the top of the Hilton Double Tree Hotel; residents also have access to the 21st floor communal roof terrace offering panoramic views of Leeds.

17TH FLOOR

DIRECT ACCESS TO THE TRAIN STATION

BALCONY

COUNCIL TAX BAND: C

COMMUNAL ROOF GARDEN

EPC: C

FAR-REACHING VIEWS

LEASEHOLD

QUALITY ONSITE AMENITIES



ABOUT.. continued

Granary Wharf is a mixed-use waterside development consisting of 282 apartments split across two residential buildings. Candle House is a 21-floor cylindrical tower with 160 apartments and Watermans Place is a tiered building with a further 122 apartments. Built by Muse Developments in 2009/2010. Granary Wharf offers a great range of amenities including restaurants, bars, cafes as well as a convenience store, nail salon, hotel and direct access to the southern entrance to the train station.

The development sits on a site flanked by the railway arches, the Leeds Liverpool canal basin and the River Aire. Vehicular access is off Wharf approach via Water Lane and pedestrian access is either via the dark arches or Little Neville Street and then by crossing the foot bridge.

We are advised of the following leasehold information:

Service charge Approx. £2460.A
Ground rent is £275 P.A
Lease length 250 years from 2007

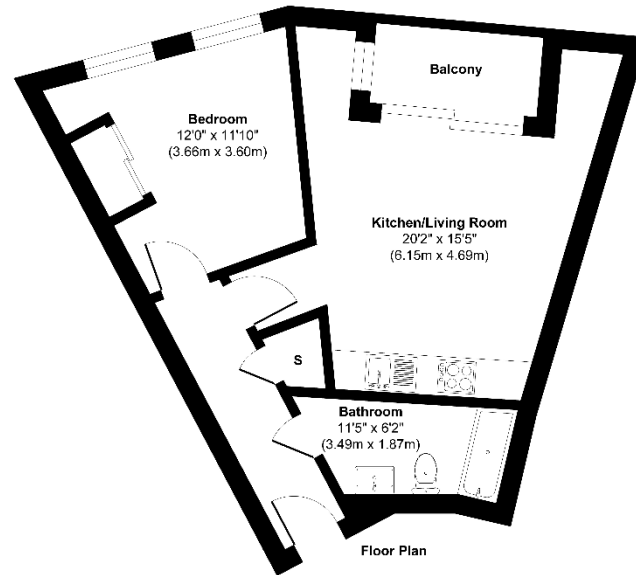








130 Candle House, Leeds LS1 4GJ



Approx. Gross Internal Floor Area 534 sq. ft./ 49.6 sq. m

Evolution for identification purposes only, measurements are approximate, not to scale

Produced by Farnells Property



EPC



Lease information

250 from
2007

Lease length

£2460
P.A

Service charge

£275
P.A

Ground rent



For more information or to arrange a viewing contact
Ian Darley, Zenko Properties



Zenko Properties, 2 The
Chandlers, Leeds, LS2 7EZ



0113 247 0777



ian@zenkoproperties.co.uk



www.zenkoproperties.co.uk



ZENKO
CITY LIVING