



Bridgewater Place
Leeds, LS11

ZENKO
Properties

FOR SALE

£189,950

A 21ST FLOOR TWO BEDROOM DUAL ASPECT APARTMENT WITH ALLOCATED
SECURE CAR PARKING AND FULL WIDTH SOUTH FACING TERRACE

















Two bedroom apartment

2

Bedrooms

2

Bathrooms

640

SQ FT



ABOUT

A two bedroom and two bathroom apartment positioned on the 21st floor of Bridgewater Place.

Bridgewater place is a 30 storey tower in the heart of the city centre. It is a mixed-use scheme comprising of offices, residential apartments, a gym, a supermarket and dedicated concierge to the residential element. It is one of the most sought after developments in the city centre, being located close to the train station, the shopping district and financial district of Leeds- it has everything you could possibly need right on its doorstep.

TWO BEDROOMS AND TWO BATHROOMS

FULL-WIDTH BALCONY

21ST FLOOR

LEASEHOLD

ALLOCATED SECURE CAR PARKING

EPC: C

CORNER ASPECT

COUNCIL TAX BAND: D

SOUTH FACING

AVAILABLE WITHOUT PARKING OR WITH AN
ADDITIONAL BAY - PLEASE ENQUIRE FOR PRICES



ABOUT.. continued

Leasehold details

Ground rent: £370.03 P.A

Service charge: £3838.64 P.A

Lease length : 250 years from January 2007

Heating:

Electric wall mounted heaters, Metred consumption

Water:

Mains connected, via a meter

Broadband:

High speed fibre

Mobile signal:

No issues to report

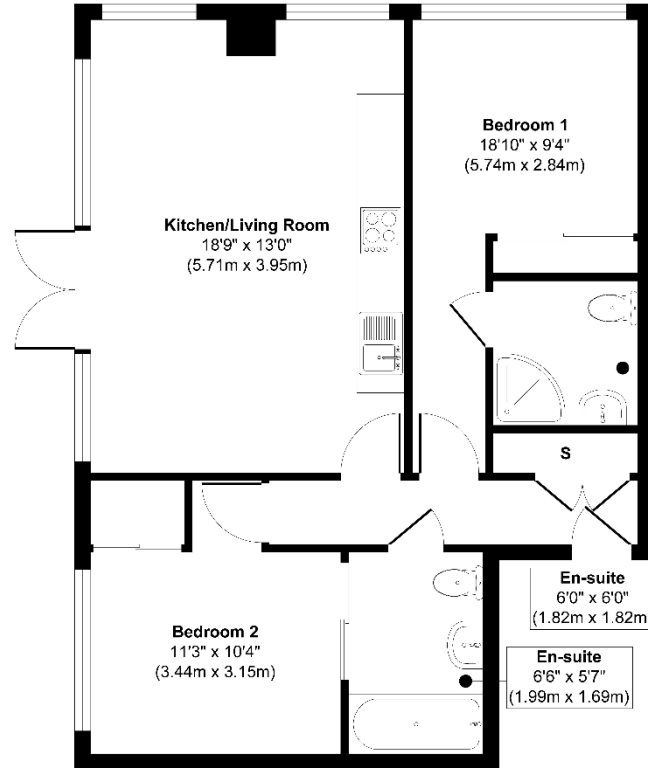








2103 Bridgwater Place, Leeds LS11 5BZ

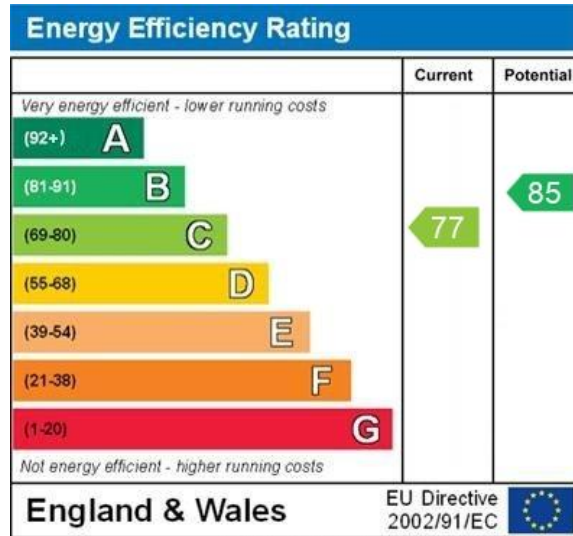


Floor Plan

Illustration for identification purposes only, measurements are approximate, not to scale.
Produced by Elements Property



EPC



WWW.EPC4U.COM



Lease information

250 from
2007

Lease length

£3838
P.A

Service charge

£370
P.A

Ground rent



For more information or to arrange a viewing contact
Ian Darley, Zenko Properties



Zenko Properties, 2 The
Chandlers, Leeds, LS2 7EZ



0113 247 0777



ian@zenkoproperties.co.uk



www.zenkoproperties.co.uk



ZENKO
Properties