



Centaur House
Leeds, LS1

ZENKO
Properties

FOR SALE

£190,000

A ONE BEDROOM APARTMENT WITH EXPOSED BRICK WORK, HIGH CEILINGS AND
ONE ALLOCATED GATED CAR PARKING SPACE.















One bedroom apartment

1

Bedrooms

1

Bathrooms

634

SQ FT



ABOUT

A spacious apartment in a very well-established Grade II listed converted building in a central location. Many of the city's amenities are within easy walking distance including the Nuffield Hospital (1 min), the Railway Station (15 mins), LGI (9 mins), the Law Courts (4 mins) and Wellington Place (13 mins). Additionally, the main shopping destinations of Trinity (13 mins) and Victoria Gate (16 mins) are within easy reach. (All walking times are quoted from Google Maps)

SPACIOUS ONE BEDROOM APARTMENT

LONG LEASE AND LOW GROUND RENT

GRADE II LISTED CONVERSION WITH EXPOSED
BRICKWORK, LARGE WINDOWS AND HIGH CEILINGS

COUNCIL TAX BAND: D

ALLOCATED SECURE CAR PARKING SPACE

LEASEHOLD

634 SQUARE FEET

EPC: C

MODERN BATHROOM



ABOUT.. continued

Centaur House is a Grade II listed former factory converted into residential apartments in 1997. The building sits on the corner of Great George Street and Leighton Street. A number of apartments retain period features including exposed brickwork, 12-foot-high ceilings, cast iron pillars and large windows. Some apartments have an allocated gated parking space.

We are advised that the current service charge £1468.66

We are advised that the current ground rent is £100

We are advised that the current buildings insurance is £715.72

We are advised that the lease is 999 years from 1997

Heating:	Electric wall mounted heaters, Metred consumption
Water:	Mains connected, via a meter
Broadband:	High speed fibre
Mobile signal:	No issues to report
Construction type:	Conversion
Flood Risk:	None
Local Planning Permissions:	Ground floor conversion of gym space into apartments





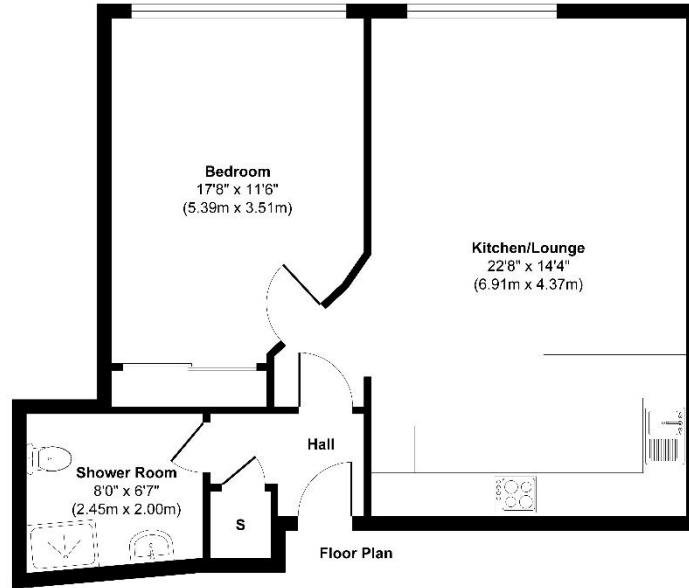




MOËT & CHANDON
CHAMPAGNE

Floorplan

43 Centaur House, Leeds LS1 3LA



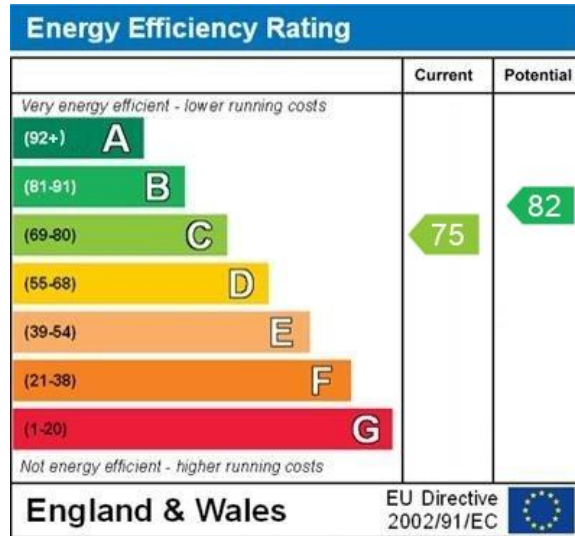
Approx. Gross Internal Floor Area 634 sq. ft / 58.98 sq. m

Illustration for identification purposes only, measurements are approximate, not to scale.

Produced by Elements Property



EPC



WWW.EPC4U.COM



Lease information

999 from
1997

Lease length

£1468.66
P.A

Service charge

£100
P.A

Ground rent



For more information or to arrange a viewing contact
Ian Darley, Zenko Properties



Zenko Properties, 2 The
Chandlers, Leeds, LS2 7EZ



0113 247 0777



ian@zenkoproperties.co.uk



www.zenkoproperties.co.uk



ZENKO
Properties