



Victoria Riverside
Leeds, LS10

ZENKO
Properties

FOR SALE

£249,950

A SPACIOUS TWO BEDROOM APARTMENT EXTENDING TO APPROXIMATELY 626
SQUARE FEET IN THIS POPULAR CONVERTED DEVELOPMENT















Two bedroom apartment

2

Bedrooms

1

Bathrooms

626

SQ FT



ABOUT

A spacious apartment within a recently converted building in a popular location. Many of the city's amenities are within easy walking distance including the General Infirmary (44 mins), the Law Courts (42 mins), the Railway Station (37 mins), the Business District (41 mins) and the main shopping areas of Trinity (29 mins) and Victoria Gate (31 mins) are also close by. Additionally, Leeds Dock (12 mins) features a Tesco Metro, restaurants, cafes, bars, and car parking.

(All walking times are quoted from Google Maps)

TWO BEDROOMS

EPC: D

ALLOCATED CAR PARKING

LEASEHOLD

MILL CONVERSION

COUNCIL TAX BAND: A

IDEAL FOR FIRST TIME BUYERS/BUY TO LET

623 SQUARE FEET

Victoria Riverside is a scheme of approximately 350 apartments built by JM Construction. The development sits on the junction of Goodman Street and Atkinson Street and is formed from the conversion of the former Hunslet and Victoria flax spinning mills, a number of apartments have terraces and some have allocated car parking.

Length of lease: 125 years from 2019

Service charge: £2483.41 per annum

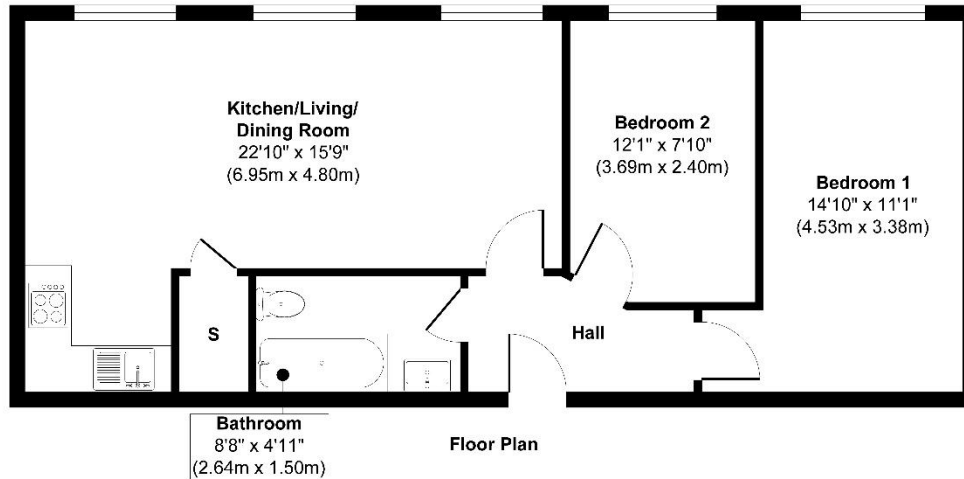
Ground rent: £295 per annum reviewed every 10 years in line with RPI





Floorplan

Flat 11, Block D, Riverside, Leeds LS10 1ER

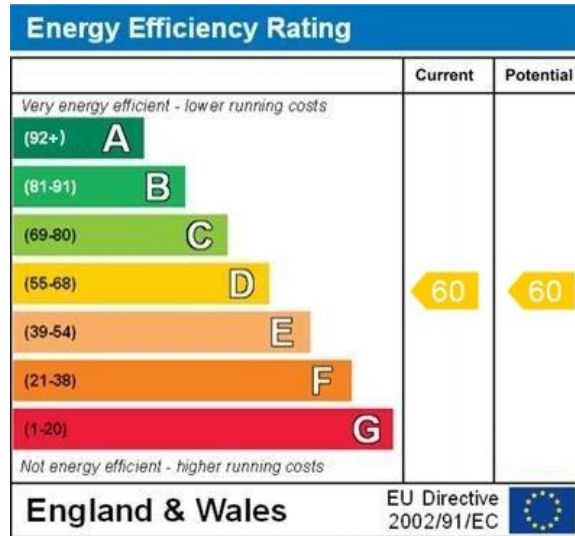


Approx. Gross Internal Floor Area 626 sq. ft / 58.25 sq. m

Illustration for identification purposes only - measurements are approximate, not to scale.
Produced by Elements Property



EPC



WWW.EPC4U.COM



Lease information

125 from
2019

Lease length

£2483
P.A

Service charge

£295
P.A

Ground rent



For more information or to arrange a viewing contact
Ian Darley, Zenko Properties



Zenko Properties, 2 The
Chandlers, Leeds, LS2 7EZ



0113 247 0777



ian@zenkoproperties.co.uk



www.zenkoproperties.co.uk



ZENKO
Properties