

## Cressbrook Road, WA4 6JH

£450,000

 3  1  2



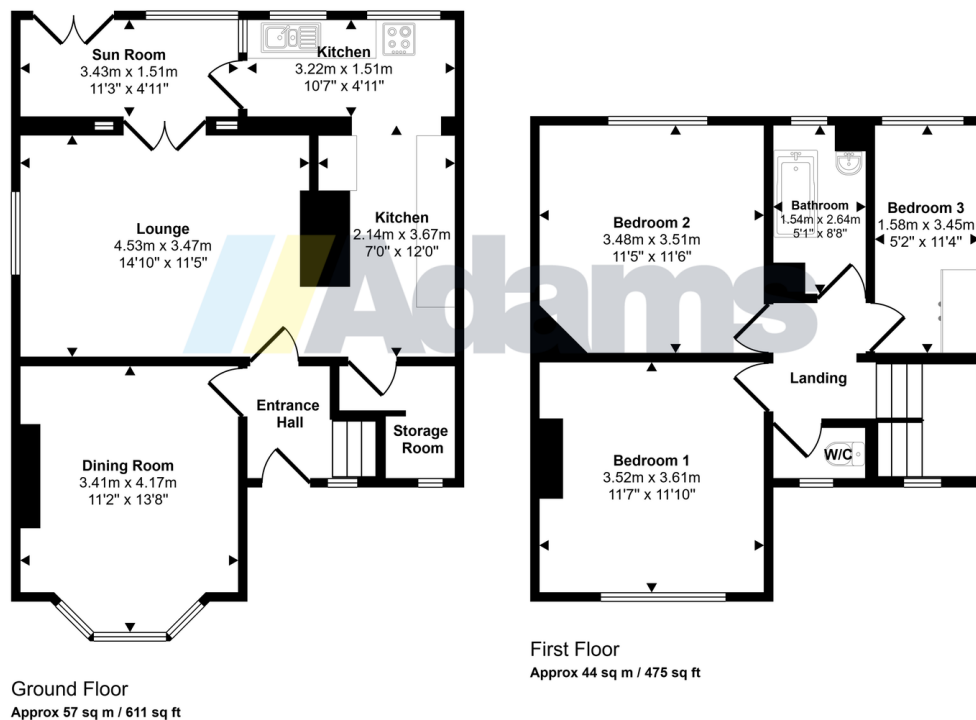
Adams Estate Agents are delighted to welcome to the market this substantial period semi, located in a favourable position within a sought after Stockton Heath cul-de-sac.

Features briefly include; entrance hall, lounge, dining room, sun room, kitchen, first floor landing, three bedrooms and bathroom. Outside there is a large, South facing garden at the rear and a substantial sized driveway.

Early Viewing Advised. No Chain Delay With This Sale.

- Semi Detached House
- Central Village Location
- Large South Facing Garden
- Driveway
- No Chain Delay
- Sought After Cul-De-Sac
- Three Reception Rooms
- Three Bedrooms
- Early Viewing Advised
- Freehold

Approx Gross Internal Area  
101 sq m / 1086 sq ft



This floorplan is only for illustrative purposes and is not to scale. Measurements of rooms, doors, windows, and any items are approximate and no responsibility is taken for any error, omission or mis-statement. Icons of items such as bathroom suites are representations only and may not look like the real items. Made with Made Snappy 360.