



Prestbury Drive, Thelwall, WA4 2HZ

£250,000

3 1 2



A three bedroom semi-detached bungalow in a popular Thelwall location.

Features include; entrance porch & hall, lounge, kitchen / dining room, three bedrooms, bathroom, driveway parking for several cars, a detached garage and a lovely South facing garden to the rear.

Early Viewing Advised. No Chain Delay With This Sale.

Viewing

By prior appointment through our Stockton Heath office on 01925-398343.

Note

All measurements are approximate. No appliances or central heating systems referred to within these particulars have been tested and therefore their working order cannot be verified. Floor plans are for guide purposes only and all dimensions are approximate and are not to be used for room and furniture planning.

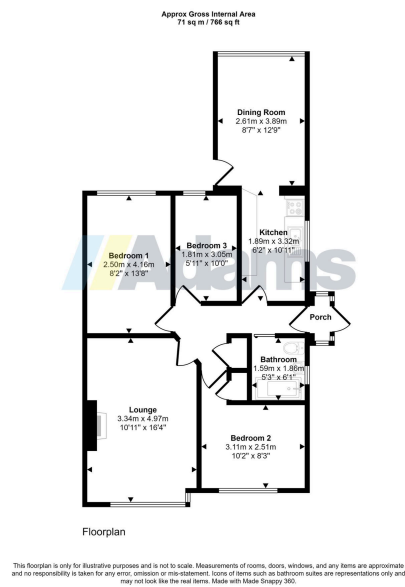
Agents Notes

Tenure: Leasehold

Council Tax Band: C

Local Authority: Warrington Borough Council





- Semi - Detached Bungalow
- Popular Thewall Location
- Three Bedrooms
- Extended Kitchen / Diner
- South Facing Garden
- Detached Garage
- Early Viewing Advised
- No Chain Delay

