

Castle
Green

PROUD TO BE A 5*
HOUSEBUILDER



Keckwick Hill Crescent, Daresbury Warrington, Cheshire



MA
Mark Antony

Mark Antony
SALES & LETTING AGENTS

HIGHLIGHTS

- Energy efficient
- Large open-plan kitchen, dining and family area
- En-suite to primary bedroom
- Integrated garage
- Easy Move Scheme – estate agent fees covered T&Cs apply
- 10-Year NHBC Warranty
- Digitally customise your new home with Willow, by Castle Green
- In-roof PV system
- Part Exchange Available. T&Cs Apply
- EV Charging point

ABOUT THE BEAUMONT

Discover The Beaumont by Castle Green Homes at Bridgewater View — a spacious and elegant four-bedroom home, designed with modern family living in mind.

From the moment you step inside, The Beaumont welcomes you with a sense of space and sophistication. To the front of the home, a separate lounge offers a quiet retreat—perfect for cosy evenings or entertaining guests. At the rear, the open-plan kitchen, dining and family area is the true heart of the home. With plenty of room for cooking, dining and relaxing, it's a bright and flexible space where everyday moments are made. French doors open onto the garden, creating a seamless connection for effortless indoor-outdoor living. A handy downstairs cloakroom and a single garage provide added practicality and convenience.

Upstairs, four well-sized bedrooms offer space for the whole family. The primary bedroom features its own en-suite, creating a private sanctuary, while the remaining bedrooms are served by a stylish family bathroom. The Beaumont perfectly balances comfort, style and functionality — A perfect home for families seeking space, style and comfort in the heart of Daresbury. Get in touch to secure this stunning new energy-efficient home today with Castle Green Homes and Mark Antony Estates.



CUSTOMISE YOUR HOME DIGITALLY WITH WILLOW

Exclusive to Castle Green Homes, Willow—Your Digital New Home Assistant—redefines the homebuying experience. With Willow, customising your new home is at your fingertips. Through its digital twin technology, you can personalise every aspect of your home virtually, from fixtures and finishes to other key details, all through our interactive configurators.

Not sure which house type is best for you and your family? Willow's comparison tool makes it simple to find the perfect match. Forget about paper printouts and misplaced documents—Willow securely stores all of your important files, offering you peace of mind.

Communication has never been easier. Willow streamlines your interactions with our team, from consulting with our sales advisors to post-completion support. With the ability to precisely pinpoint snags and an integrated calendar system, booking appointments with our customer care team is effortless. Everything is managed seamlessly in one place, so nothing is ever missed.

With Castle Green Homes, you're not just buying a home—you're creating one, with Willow by your side



LOCATION

Discover the perfect place to call home at Bridgewater View at Daresbury Garden Village - a new development located in the idyllic village of Daresbury, Cheshire, forming part of the Daresbury Garden Village. Surrounded by lush greenery, this peaceful community provides a tranquil retreat away from the hustle and bustle of city life. Residents of Bridgewater View will enjoy a range of shops and amenities that will be built in the future, adding to the convenience of this already well-situated location. Plus, with Daresbury Business Park, Warrington, and Runcorn all within easy reach, residents will have access to a range of employment opportunities and local services. The Bridgewater Canal is a picturesque destination for boating and leisure activities and offers stunning views of the local countryside. Additionally, Bridgewater View is located near the multi-occupied Sci-Tech Daresbury Science Park, a renowned facility for business and research. Transportation connections are seamless, with easy access to Runcorn, Warrington, and Altrincham. Whether you're seeking a peaceful retreat or the excitement of city life, Bridgewater View truly offers the best of both worlds.

IMPORTANT INFORMATION

Not all fixtures and fittings shown are available or included, please contact the sales team to discuss.

DIMENSIONS

Kitchen/Family/Dining - 7.50m x 3.75m / 24'7" x 12'4"
Lounge - 5.02m x 3.46m / 16'6" x 11'4"
Cloaks - 1.50m x 1.06m / 4'11" x 3'6"
Bedroom 1 - 4.10m x 3.52m / 13'5" x 11'7"
En-suite - 2.58m x 1.19m / 8'6" x 3'11"
Bedroom 2 - 3.32m x 2.90m / 10'11" x 9'6"
Bedroom 3 - 3.73m x 3.52m / 12'3" x 11'7"
Bedroom 4 - 3.68m x 2.88m / 12'1" x 9'5"
Bathroom - 2.45m x 1.82m / 8' x 6'



GENERAL INFORMATION

Local Authority: Halton Borough Council
Council Band: New Build
Tenure: Freehold
(Property tenure to be confirmed by solicitors)

Contents, Fixtures and Fittings

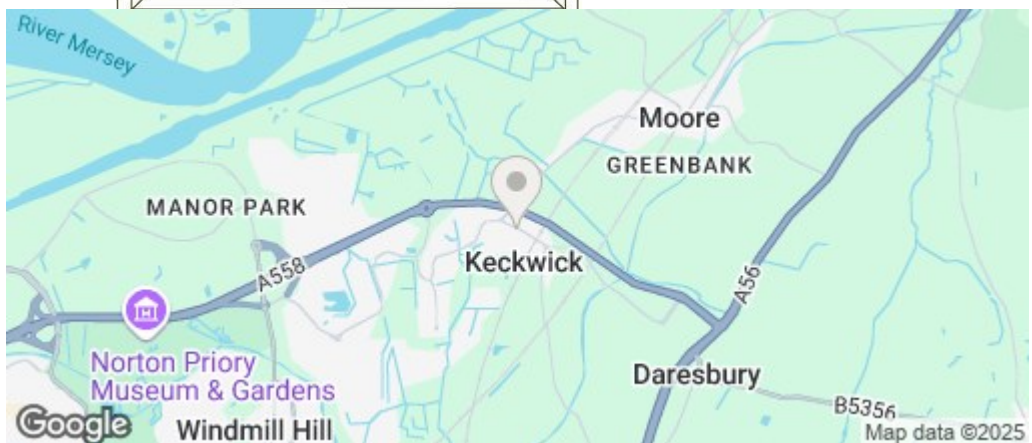
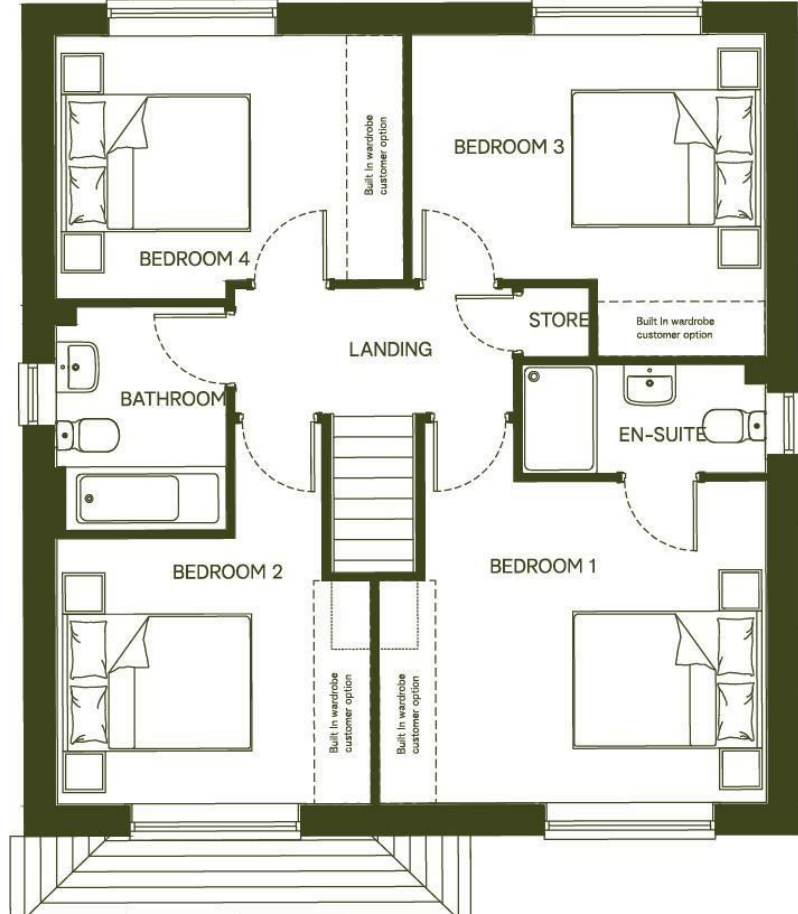
Not included in the asking price. These items may be available under separate negotiation.





IMPORTANT NOTICE

Mark Antony Estates wishes to inform all interested parties that these sales particulars have been prepared in good faith as a general guide only. We have not conducted a detailed survey and not checked the availability or function of any service or appliance. Any floor plans shown are for illustration purposes only and may not be drawn to scale. Room sizes stated are approximate and should not be relied upon for furnishing purposes. If there is any important matter that is likely to affect your decision to purchase; we strongly advise you telephone our office in advance of viewing the property and then verify any details with an independent Surveyor or Solicitor. These particulars do not form part of any offer or contract and must not be relied upon as statements or representations of fact.



Energy Efficiency Rating		
	Current	Potential
Very energy efficient - lower running costs		
(92 plus) A		
(81-91) B		
(69-80) C		
(55-68) D		
(39-54) E		
(21-38) F		
(1-20) G		
Not energy efficient - higher running costs		
England & Wales		EU Directive 2002/91/EC

VIEWING ARRANGEMENTS

Viewing is strictly by appointment only. Please call 01925 267070 to arrange a viewing.

OTHER SERVICES

Upon request, we can assist with many property related services. Including:

- Mortgages • Survey • Removals • Insurance
- Conveyancing • EPCs



Mark Antony
SALES & LETTING AGENTS

Sales@MarkAntonyEstates.com
www.MarkAntonyEstates.com
Tel: 01925 267070