

Ferris&Co



Monthly Rental Of £1,300 pcm
Holding deposit equivalent to 1 week's rent on application



12 Flume End
Maidstone, ME15 6FW

TEL: 01622 737800
Email:
lettings@ferrisandco.net
www.ferrisandco.net

Westwood House
Thurnham Lane
Maidstone, Kent
ME14 4QZ

DESCRIPTION

Well presented mid-terrace with two allocated parking spaces. Within 100m of the river bank and tow path. Quiet cul-de-sac position. Well fitted kitchen and bathroom. UPVC double glazed windows. 560sq' over two floors.

Located in this well established and popular residential position within easy access of a good selection of local amenities which include a recently opened infant and junior school, shops, children's play areas and access onto the tow path which in turn provides access to the Millennium Park and amphitheatre. The town centre is approximately one mile distant and offers an excellent selection of amenities including shopping facilities at the Mall and Fremlins Walk, two museums, theatre, County library, multi-screen cinema and two railway stations connected to London. For older children there is a selection of schools and colleges. The M20/M2M25 and M26 motorways are also close by and offer direct vehicular access to both London and the Channel Ports.

ON THE GROUND FLOOR

ENTRANCE PORCH

Partly glazed UPVC entrance door. Outside light. Door to:

LIVING ROOM 14' 7" x 11' 0" (4.44m x 3.35m)

Open tread staircase to first floor. Window to front. Fitted blinds. Night storage heater.

KITCHEN 11' 0" x 8' 0" (3.35m x 2.44m)

Well fitted with units having sage green door and drawer fronts with pewter fittings and wood effect working surfaces. Stainless steel sink with mixer tap. 4 burner electric hob. Oven beneath. Plumbing for automatic washing machine. Fridge freezer. Vinyl flooring. Window and glazed door overlooking rear garden. Tiled splashbacks.

ON THE FIRST FLOOR

LANDING

Night storage heater.

BEDROOM 1 11' 4" x 8' 9" (3.45m x 2.66m)

Two built in storage cupboards. Panel heater. Window to front.

BEDROOM 2 8' 0" x 6' 0" (2.44m x 1.83m)

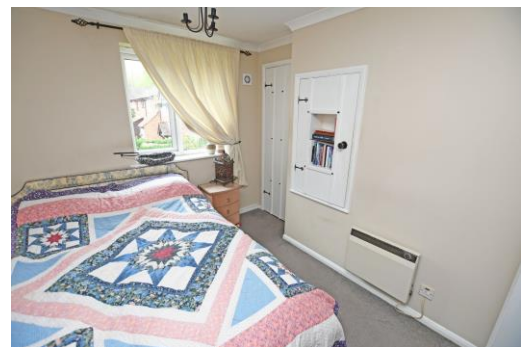
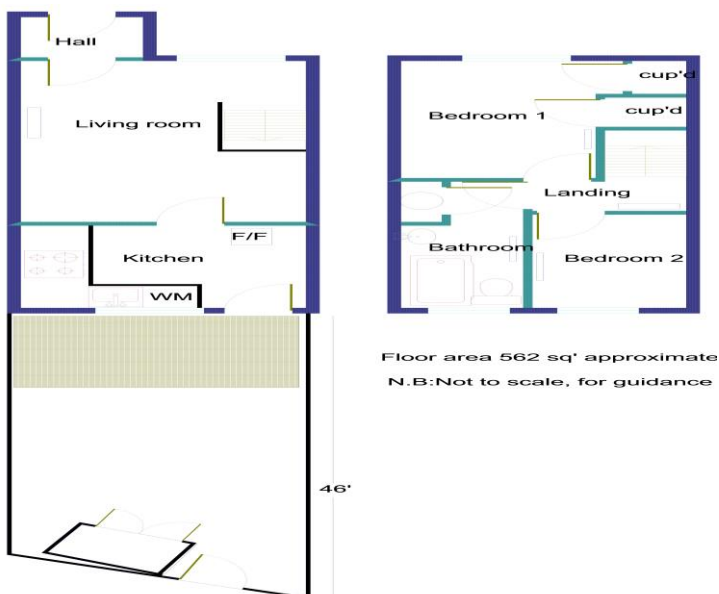
Window to rear. Radiator.

BATHROOM

White suite. Shaped panelled bath. Mixer tap and shower attachment. Pedestal hand basin. Low level W.C. Vinyl flooring. Heated towel rail. Built in linen cupboard.

OUTSIDE

Front garden laid to lawn. Rear garden extends to 46'. Fully fenced with paved patio area adjacent to house. Timber shed. Allocated parking area close by. Space for 2 vehicles.



DIRECTIONS

From Maidstone leave via Stone Street a continuation of which is the Loose Road, turning right into the one way system at Sheals crescent. Take the second turning on the left into Old Tovil Road, a continuation of which is Tovil Road. Take the second turning on the right into Church Road. Take the third turning on the right into Launder Way, at the roundabout take the first exit into Bridge Mill Way and then take the 3rd turning on the right into Flume End.

