

40 Elm Park Avenue, London, N15 6AU

£1,100,000



# 40 Elm Park Avenue, London N15 6AU

Elm Park Avenue, Stamford Hill, N15

Alwyne Estates are delighted to present this charming inter-war, two-storey mid-terraced family home with a loft conversion, located in the heart of Stamford Hill.

The property offers four bedrooms, a bright and airy through living room, a separate fitted kitchen, a family bathroom/WC, and a private rear garden.

Ideally positioned for excellent transport links, local shops, and a wide range of amenities, this home presents an ideal opportunity for family living in a well-connected North London location.

Tenure: Freehold

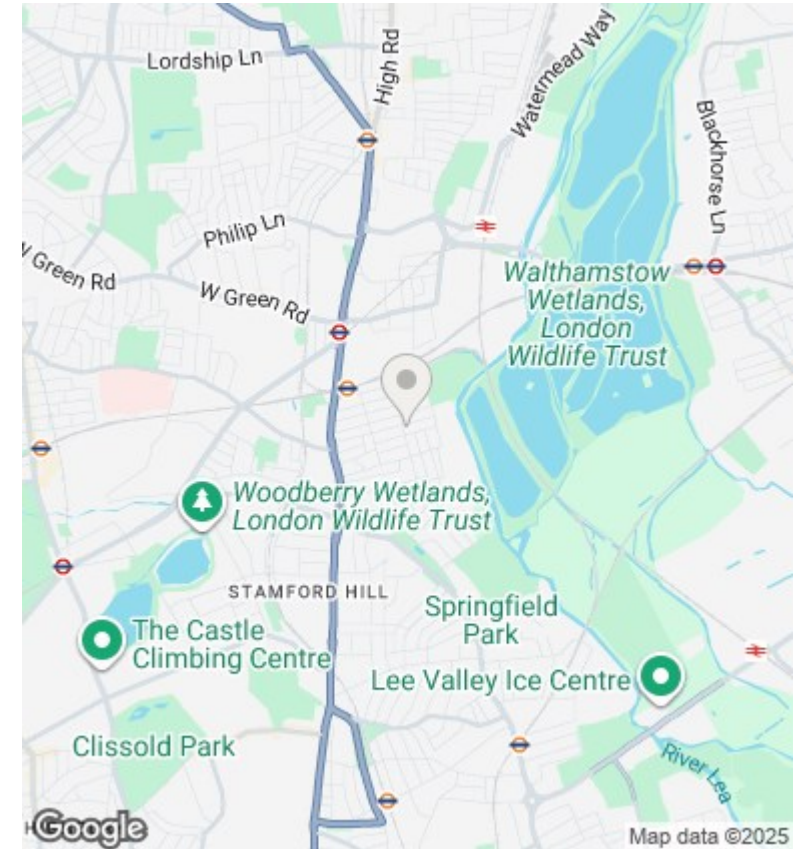
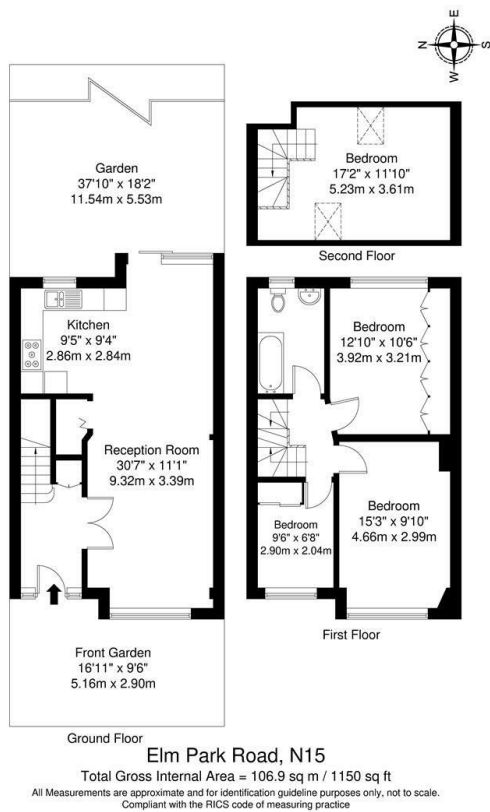
Price: £1,100,000

Chain-Free Sale



Council Tax Band: D





## Directions

## Viewings

Viewings by arrangement only. Call 02073593191 to make an appointment.

## Council Tax Band

D

