



Flat D 50 St. Thomas's Road, London, N4 2QQ

£625,000

- 2 Bathrooms
- Fitted Kitchen
- Open Plan Kitchen/Living Room
- En suite
- Fully Tiled Luxury Bathroom
- Private Court Yard
- Finsbury Park Tube
- Garden
- white goods

Flat D 50 St. Thomas's Road, London N4 2QQ

For Sale – Bright and Airy Two-Bedroom Ground Floor Flat with Private Garden in a Prime Finsbury Park Location

An excellent opportunity to purchase a beautifully presented two-bedroom ground floor flat, ideally located just moments from Finsbury Park Station (Zone 2). This spacious and light-filled property offers a superb layout and modern finish throughout, making it an ideal choice for first-time buyers, professionals, young families, or investors.

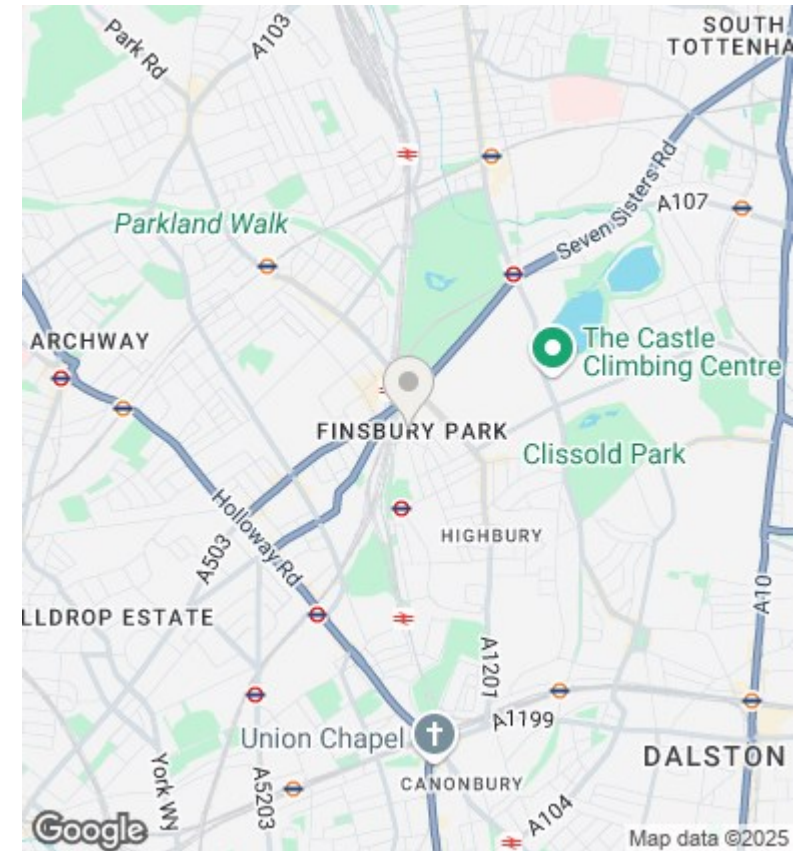
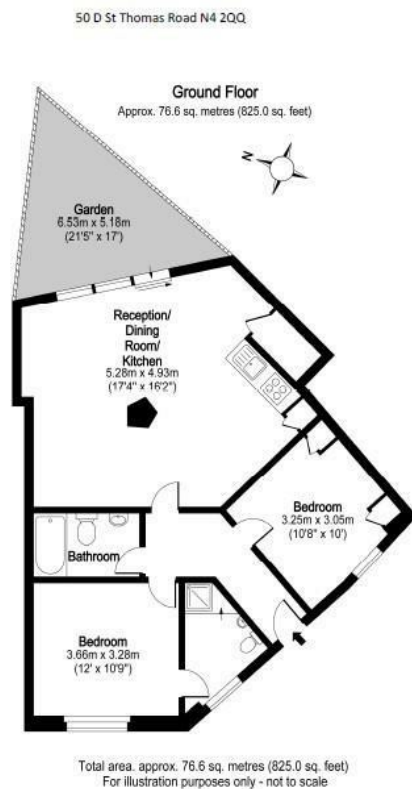
The accommodation comprises two well-proportioned double bedrooms, both with plush fitted carpets and ample space for storage. The property benefits from two contemporary bathrooms—one featuring a full-size bathtub and the other a walk-in shower—offering flexibility and convenience for modern living.

At the heart of the home is a generous open-plan living and kitchen area, with sleek wooden flooring and large windows that fill the space with natural light. The kitchen is fully fitted with modern appliances and cabinetry, offering plenty of workspace and storage for those who enjoy cooking and entertaining.



Council Tax Band: C





Directions

Viewings

Viewings by arrangement only. Call 02073593191 to make an appointment.

Council Tax Band

C

Energy Efficiency Rating		
	Current	Potential
Very energy efficient - lower running costs		
(92 plus) A		
(81-91) B		
(69-80) C	72	77
(55-68) D		
(39-54) E		
(21-38) F		
(1-20) G		
Not energy efficient - higher running costs		
England & Wales	EU Directive 2002/91/EC	

Full description

Bright and airy ground floor flat boasting two double bedrooms, an open plan living and dining area, and a modern kitchen. The flat also has wooden flooring throughout the kitchen/lounge and carpets in both bedrooms. Finsbury Park Station (zone 2) is within a 5 minute walk and local amenities are also at hand.





